

# Historic, archived document

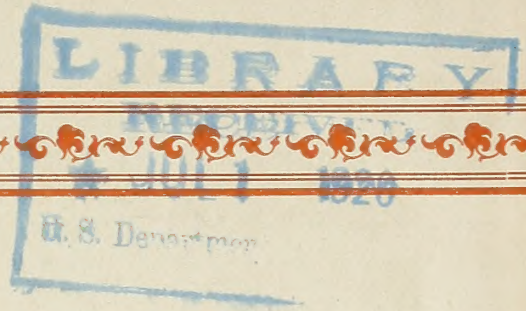
Do not assume content reflects current scientific knowledge, policies, or practices.





62.09


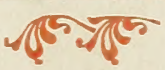
INDEXED.



No. 3

CATALOGUE AND  
PRICE - LIST

California  
Nursery  
Company

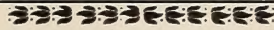
  
1901-1902  


Niles, California





**SEVENTEENTH EDITION**



Incorporated 1884

463 Acres

# ..PRICE LIST..

OF

## FRUIT AND ORNAMENTAL TREES

SMALL FRUITS, EVERGREENS,

ROSES, ETC.

OF THE

## CALIFORNIA NURSERY COMPANY

NILES, CALIFORNIA

Season of 1901-1902

December 1st, 1901

---

### LOCATION

ONE-HALF MILE NORTH OF NILES STATION, CENTRAL PACIFIC RAILROAD

TELEPHONE CONNECTION FROM STATION TO OFFICE

---

OAKLAND, CAL.

PACIFIC PRESS PUBLISHING CO.



## To Correspondents

1st. All orders should be sent in as early as possible.

2d. Orders should be legibly written out on a separate sheet and not mixed up in the body of the letter, thereby saving us a great deal of trouble, and tending to prevent mistakes.

3d. The articles in the following list will be furnished at the annexed prices *only* when the quantity specified shall be taken. FIFTY, however, will be furnished at the HUNDRED rate, and FIVE at the TEN rate. In no case does this mean so many trees of assorted classes, but refers only to *one class* of assorted varieties, for instance, 5 Apples, or 5 Pears, or 5 Plums, of different varieties, but not 2 Apples, 2 Pears, and 1 Plum.

4th. Where particular varieties are ordered, and particular ages and sizes of trees, kind of stock, etc., it should be stated whether, and to what extent, substitution will be allowed in case the order can not be filled to the letter. Where no instructions in this respect accompany the order, we shall feel at liberty to substitute other varieties as nearly similar as possible. If the selection of varieties is left *entirely* to us, we shall endeavor to send only such sorts as are acknowledged to give general satisfaction.

5th. All trees and plants are carefully labeled, and securely packed in the best manner, for which a moderate charge, sufficient to cover cost of material only, will be made; but no charge is made for the delivery of packages at the railroad or express offices at Niles.

6th. It is requested that explicit directions for marking and shipping packages accompany each order. When it is left for us to choose the mode of conveyance, we will exercise our best judgment; but as all articles are at the risk of the purchaser after being shipped, we must not be held responsible for any loss or delay that may occur through the negligence of the forwarders.

7th. Our customers are requested to notify us immediately of any errors that may be committed in filling their orders, so that we may at once rectify the same, as we desire to conduct our business in all respects satisfactorily to those who favor us with their confidence.

8th. Orders from unknown correspondents *must* be accompanied by the cash, or satisfactory reference. Orders to be sent C. O. D. *must* be accompanied by at least one-half the amount in cash; otherwise, they will receive no attention.

9th. Remittances may be made by draft on San Francisco, Wells, Fargo & Company's and post-office money orders on Niles, or cash by express, prepaid.

10th. Orders priced at single rates, and not exceeding four pounds in weight, can be forwarded by mail, postage paid; but when possible we recommend having them sent by express, as we are then able to send much stronger and better plants.

All communications to be addressed to

CALIFORNIA NURSERY COMPANY,  
NILES, CALIFORNIA.

JOHN ROCK, Manager.



## Remarks

We have pleasure in submitting herewith our price list for the coming season (Seventeenth Edition). It is our aim and intention, as hitherto, to supply only the best stock at the lowest prices, and the stock in hand for the new season is larger and more varied than ever before. We invite all to visit the Nursery, which is the largest, by far, of any on the Pacific Coast, whether as intending purchasers, or otherwise. If parties will notify us of the time of their arrival at Niles, we will have conveyance at station to meet them.

To reach our Nursery from San Francisco, take the broad-gauge ferry-boat for Oakland, leaving at 8:00, 8:30, and 9:00 A. M., and 3:30, 4:00, 4:30 and 6:00 P. M. These make close connections with through trains direct to Niles. From Sacramento and all points centering there, the train leaving at 10:25 A. M. for San Francisco, *via* Lathrop, Tracy, Livermore, etc., should be taken. From San Jose and its southern connections, trains leaving at 5:45, 6:15, and 9:20 A. M., and 12:35 and 4:35 P. M.

### CALIFORNIA NURSERY COMPANY.

#### OFFICERS:

WILLIAM J. LANDERS, President,  
JOHN H. HENN, Secretary,

H. W. MEEK, Vice-President,  
CENTRAL BANK, Oakland, Treasurer.

JOHN ROCK, Manager.

#### DIRECTORS:

WM. J. LANDERS, San Francisco,  
HORRY W. MEEK, San Lorenzo,  
EGBERT B. STONE, Elmhurst,

W. G. PALMANTEER, Oakland,  
A. C. HAMMOND, JR., San Francisco,  
JOHN H. HENN, San Francisco,

EDWARD E. USLAR, Niles.

---

## Special Notice

Those only who can show a certificate of recent date, with our signature and the seal of the company attached, are authorized to solicit orders for us. We wish to call special attention to this notice, as we know it has heretofore been the practise of unprincipled persons to procure the catalogues of prominent nurseries and take orders in their names, which they fill with poor stock bought elsewhere. If our patrons will notify us of any person whom they have reason to believe is not a regularly appointed agent, we shall consider it a favor.



# Hints on Transplanting

The many excellent treatises on Fruit Culture which have appeared within the past few years—one or more of which should be in the hands of every person intending to plant—render it almost unnecessary to give any directions in that line; yet we are so frequently asked for advice in this way, that we have concluded to offer a few general remarks.

The situation of the orchard having been decided on, the ground should be deeply plowed, subsoiled and thoroughly pulverized. The holes should be dug at least a foot larger in every direction than actually required by the roots, when spread out in their natural position. In planting, the top soil should be broken down into the hole, and worked carefully in between every root and fiber, filling up every crevice, that every root may be in contact with soil, and the whole made quite firm as the filling up progresses. The tree, when planted, may in light soils stand from two to three inches deeper than it stood in the nursery; but in heavy-clay or wet ground it is advisable to have it stand at the same height as it was before transplanting.

On account of our long, hot, dry summers, we have found it beneficial to shade the sunny side of the tree with a board or shake stuck in the ground a few inches away from it, for the first two or three years. The tops should be shortened in more or less, in proportion to size and variety of tree and condition of roots.

A work, "California Fruits and How to Grow Them," by Prof. E. J. Wickson; the "Raisin Industry," by Prof. Gustav Eisen; and "Grape Culture and Wine Making," by Geo. Husmann, will be found very useful to all horticulturists, written as they are for this coast, and by authors of wide local experience.

## Distances for Planting

Standard Apples.....	25 to 30	feet apart each way
Standard Pears.....	20 to 25	" "
Strong-growing Cherries.....	20 to 25	" "
Duke and Morello Cherries.....	18 to 20	" "
Standard Plums and Prunes.....	18 to 20	" "
Peaches and Nectarines.....	18 to 20	" "
Apricots.....	25 to 30	" "
Grapes.....	7 to 10	" "
Currants and Gooseberries.....		4 by 6
Raspberries and Blackberries.....		3 to 4 by 5 to 7
Strawberries for field culture.....		1 to 1½ by 4 to 5
Strawberries for garden culture.....		1 to 2 feet apart

### Number of Trees or Plants on an Acre at Given Distances Apart

Distance, 1 foot apart each way, number plants.....	SQUARE METHOD.	EQUILATERAL TRIANGLE M <sup>TH</sup> D.
	" 2 feet apart	43,560
" 3 "	10,890	12,575
" 4 "	4,840	5,889
" 5 "	2,722	3,130
" 6 "	1,742	2,011
" 7 "	1,210	1,397
" 8 "	807	928
" 9 "	680	785
" 10 "	537	620
" 12 "	435	502
" 14 "	302	348
" 15 "	222	256
" 16 "	193	222
" 18 "	170	195
" 20 "	134	154
" 22 "	109	125
" 24 "	90	104
" 25 "	75	86
" 30 "	69	79
" 35 "	48	55
" 40 "	35	40
" 40 "	27	31

RULE—SQUARE METHOD.—Multiply the distance in feet between the rows by the distance the plants are apart in the rows, and the product will be the number of square feet for each plant or hill, which, divided into the number of feet in an acre (43,560), will give the number of plants or trees to the acre.

RULE—EQUILATERAL TRIANGLE METHOD.—Divide the number required to the acre "square method" by the decimal .866. The result will be the number of plants required to the acre by this method.



*PRICE LIST*


OF

*CALIFORNIA NURSERY CO.*

*SEASON 1901-1902*

---

Prices quoted herein are for quantities and sizes specified; for **extra sizes, varieties, or quantities other than mentioned, special prices will be made.** Estimates cheerfully furnished on such lists.

 For index, see last page of Catalogue.

*FRUIT DEPARTMENT*

All our Fruit Trees are grown on **WHOLE** Seedling roots. The advantages of these in promoting the health and thriftiness of trees over others grafted on pieces or sections of roots, or budded on stocks grown from cuttings, is acknowledged by the best authorities, and is easily apparent to the most casual observer. **All two-year-old trees are branched low and are stocky, having been cut down or headed back when yearlings, two feet aboveground, except where noted.**

All of our Apple Trees and Grapevines are fumigated with hydrocyanic gas when dug, so are the buds, scions, and cuttings, prior to budding, grafting, or planting out in Nursery. This positively kills any insects that may be thereon, without any injury to tree or vines. We have erected on our grounds a new Fumigating House, with three compartments, so that we can disinfect, at any time, either 50 trees or 10,000.

*WOOLLY APHIS PROOF APPLE*

We have grown here in our Nursery the past fifteen years, Northern Spy and Winter Majetin Apple, on their own roots. These are the two varieties principally used in Australia, where the Woolly Aphis is so very destructive on Apple Trees. Here in California there are only certain local-



ities where the Woolly Aphis does any injury, in affecting the growth of the apple trees; some varieties are more subject to the disease than others, and, consequently, suffer more.

We have propagated for the first time this season trees of the above two varieties, on their own roots. Any other variety can be grafted to these trees, either aboveground, or in the limbs. This will insure the roots of the tree perfect immunity from the Woolly Aphis.

The Northern Spy and Winter Magentin are very strong and robust growers, make a very large root-system, much stronger than the ordinary seedlings, Apples are grafted on. Varieties of weak and slow growth make large trees when grafted on these two varieties.

Price, 1-year-old trees, 3 to 4 ft., each, 75 cents.

Price, 1-year-old trees, 2 to 3 ft., each, 50 cents.

	Each.	Per 10.	Per 100.
<b>Apple</b> —2 and 3 year, $\frac{3}{4}$ to 1 in. diam.....4 to 6 ft.	25	2 00	12 00
1 year, $\frac{1}{2}$ to $\frac{3}{4}$ in. diam.....4 to 6 ft.	25	2 00	12 00
1 year, $\frac{3}{8}$ to $\frac{1}{2}$ in. diam.....3 to 4 ft.	20	1 50	10 00
<b>SUMMER</b>			
A. S. Pearmain, Carolina Red June, Chenango Strawberry, Duchess of Oldenburg, Early Harvest, Early Strawberry, Glowing Coal, Gravenstein, Keswick Codlin, Maiden's Blush, Red Astrachan, Ruby Gem, Starr, Sweet Bough, Sweet June, White Astrachan, William's Favorite.			
<b>AUTUMN</b>			
Alexander, Beauty of Kent, Fall Pippin, Fameuse, Gloria Mundi, Golden Pippin, Golden Russet, Haas, Holland Pippin, Hoover, Hubbardston's Nonsuch, Jonathan, King of Tompkins Co., Rambo, Red Bietigheimer, Rhode Island Greening, Roxbury Russet, Skinner's Pippin, Twenty Ounce, Wealthy, Westfield Seek-no-Further.			
<b>WINTER</b>			
Arkansas Black, Bailey Sweet, Baldwin, Ben Davis (New York Pippin), Bismarck, Canada Reinette, Dominie, Esopus Spitzenburg, Grimes Golden Pippin, Lady Apple, Lawver, Limbertwig, Marshall Red, Missouri Pippin, Nickajack, Northern Spy, Ortlely (White Bellflower), Paragon, Peck's Pleasant, Pewaukee, Pryor's Red, Rawles' Janet, Red			



	Each.	Per 10.	Per 100.
Canada, Red Pearmain, Ribston Pippin, Rome Beauty, Salome, Smith's Cider, Sonoma, Stark, Swaar, Tolman's Sweeting, Vandevere (Newtown Spitzenburg), Virginia Greening, Wagener, Walbridge, White Winter Pearmain, Winesap, Wolf River, Yellow Bellflower, Yellow Newtown Pippin, York Imperial.			
<b>Crab Apple</b> —2 and 3 year, $\frac{3}{4}$ to 1 in. diam....4 to 6 ft.	25	2 00	12 00
1 year, $\frac{1}{2}$ to $\frac{3}{4}$ in. diam....4 to 6 ft.	25	2 00	12 00
1 year, $\frac{3}{8}$ to $\frac{1}{2}$ in. diam....3 to 4 ft.	20	1 50	10 00
Hyslop, Montreal Beauty, Paul's Imperial, Red Siberian, Transcendent, Whitney's No. 20, Yellow Siberian (Golden Beauty).			
<b>Pear</b> —On Pear,			
2 and 3 year, $\frac{3}{4}$ to $1\frac{1}{2}$ in. diam...4 to 6 ft.	30	2 50	18 00
2 year, $\frac{3}{4}$ to 1 in. diam.....3 to 4 ft.	25	2 00	16 00
1 year, $\frac{1}{2}$ to $\frac{3}{4}$ in. diam.....4 to 6 ft.	30	2 50	18 00
1 year, $\frac{1}{2}$ to $\frac{5}{8}$ in. diam. ....3 to 4 ft.	25	2 00	16 00
1 year, $\frac{3}{8}$ to $\frac{1}{2}$ in. diam.....2 to 3 ft.	20	1 75	14 00
<b>SUMMER</b>			
Bartlett, Clapp's Favorite, Lawson (or Comet), Leconte, Madeline, Souvenir du Congress.			
<b>AUTUMN</b>			
Beurre Clairgeau, Beurre d'Anjou, Beurre Diel, Beurre Hardy, B. S. Fox, Dana's Hovey (Winter Seckel), Doyenne du Comice, Duchesse d'Angouleme, Flemish Beauty, Howell, Idaho, Kieffers Hybrid, Louise Bonne de Jersey, Onondaga (Swan's Orange), Seckel, White Doyenne.			
<b>WINTER</b>			
Col. Wilder, Doyenne d'Alencon, Easter Beurre, Emile de Heyst, Forelle (or Trout Pear), Glout Morceau, Pound, P. Barry, Vicar of Winkfield, Winter Bartlett, Winter Nelis.			
<b>Pear</b> —On Quince, 2 year, $\frac{3}{4}$ to 1 in. diam.....4 to 6 ft.	30	2 50	18 00
$\frac{3}{8}$ to $\frac{3}{4}$ in. diam.....3 to 4 ft.	25	2 00	15 00
Bartlett, Beurre Diel, Beurre Hardy, Duchesse d'Angouleme, Easter Beurre, Emile de Heyst, P. Barry, Winter Nelis.			



	Each.	Per 10.	Per 100.
<b>Cherry—On Mazzard,</b>			
2 and 3 year, $\frac{3}{4}$ to 1 in. diam . . . 4 to 6 ft.	30	2 50	18 00
2 year, $\frac{5}{8}$ to $\frac{3}{4}$ in. diam..... 3 to 4 ft.	25	2 00	15 00
1 year, $\frac{1}{2}$ to $\frac{3}{4}$ in. diam..... 4 to 6 ft.	30	2 50	18 00
1 year, $\frac{1}{2}$ to $\frac{5}{8}$ in. diam..... 3 to 4 ft.	25	2 00	15 00
Belle d'Orleans, Belle Magnifique, Black Eagle, Black Tartarian, Burr's Seedling, California Advance, Centennial, Chapman, Cleveland Bigarreau, Coe's Transparent, Early Lamaurie, Early Richmond, Early Purple Guigne, Elton, Empress Eugenie, English Morello, Governor Wood, Great Bigarreau (Black Bigarreau), Knight's Early Black, Lambert, Lewelling (Black Republican), May Duke, Napoleon Bigarreau (Royal Ann), Nouvelle Royale, Olivet, Ostheimer Weichsel, Pontiac, Reine Hortense, Rockport Bigarreau, Schmidt's Bigarreau, Yellow Spanish.			
<b>Plum—On Myrobolan,</b>			
2 year, $\frac{5}{8}$ to $\frac{3}{4}$ in. diam..... 4 to 6 ft.	30	2 50	20 00
2 year, $\frac{1}{2}$ to $\frac{5}{8}$ in. diam..... 3 to 4 ft.	25	2 00	18 00
Chalco, Climax, America, Apple, Pearl.			
<b>Plum—On Myrobolan,</b>			
2 year, $\frac{5}{8}$ to $\frac{3}{4}$ in. diam..... 4 to 6 ft.	25	2 00	15 00
2 year, $\frac{1}{2}$ to $\frac{5}{8}$ in. diam..... 3 to 4 ft.	20	1 50	12 00
Abundance, Bavay's Green Gage, Botan, Bradshaw, Berckman, Burbank, Chabot Blood, Clyman, Coe's Golden, Coe's Late Red, Columbia, Czar, Damson, Duane's Purple, Early Golden, Green Gage, Hale's, Imperial Gage, Jefferson, Juicy, Kelsey Japan, Normand, Peach, Perdrignon Rouge, Prince Engelbert, Quackenboss, Red June, Red Egg, Royal Hative, Simon, Victoria, Washington, Wickson, Yellow Egg.			
<b>Plum—On Myrobolan,</b>			
1 year, $\frac{5}{8}$ to $\frac{3}{4}$ in. diam..... 4 to 6 ft.	25	2 00	15 00
1 year, $\frac{1}{2}$ to $\frac{5}{8}$ in. diam..... 3 to 4 ft.	20	1 50	12 00
Abundance, Bavay's Green Gage, Burbank, Cherry, Clyman, Columbia, Damson, Diamond, Green Gage, Grand Duke, Jefferson, Kelsey Japan, Washington, Wickson, Yellow Egg.			
<b>Prune—On Myrobolan, Sugar,</b>			
1 year, $\frac{5}{8}$ to $\frac{3}{4}$ in. diam..... 4 to 6 ft.	30	2 50	20 00
1 year, $\frac{1}{2}$ to $\frac{5}{8}$ in. diam..... 3 to 4 ft.	25	2 00	16 00
1 year, $\frac{3}{8}$ to $\frac{1}{2}$ in. diam..... 2 to 3 ft.	20	1 75	14 00



	Each.	Per 10.	Per 100.
<b>Prune</b> —On Myrobolan,			
2 year, $\frac{3}{4}$ to 1 in. diam. .... 4 to 6 ft.	25	2 00	12 00
2 year, $\frac{5}{8}$ to $\frac{3}{4}$ in. diam.... 3 to 4 ft.	20	1 50	10 00
1 year, $\frac{5}{8}$ to $\frac{3}{4}$ in. diam..... 4 to 6 ft.	25	2 00	12 00
1 year, $\frac{1}{2}$ to $\frac{5}{8}$ in. diam..... 3 to 4 ft.	20	1 50	10 00
Fellenberg, French (Petited' Agen), German, Giant, Golden, Hungarian, Robe de Sargent, Silver, St. Catherine, St. Martin, Tragedy, Tennant.			
<b>Prune</b> —On Myrobolan, Imperiale Epineuse,			
2 year, $\frac{3}{4}$ to 1 in. diam.. .... 4 to 6 ft.	25	2 00	12 00
2 year, $\frac{5}{8}$ to $\frac{3}{4}$ in. diam..... 3 to 4 ft.	20	1 50	10 00
1 year, $\frac{5}{8}$ to $\frac{3}{4}$ in. diam..... 3 to 4 ft.	20	1 50	10 00
1 year, $\frac{1}{2}$ to $\frac{5}{8}$ in. diam..... 2 to 3 ft.	15	1 20	8 00
<b>Prune</b> —On Peach, 2 year, $\frac{3}{4}$ to 1 in. diam... 4 to 6 ft.	25	2 00	12 00
2 year, $\frac{5}{8}$ to $\frac{3}{4}$ in. diam. .. 3 to 4 ft.	20	1 50	10 00
French (Petite d' Agen), Imperiale Epineuse, Silver, Tragedy.			
<b>Prune</b> —On Almond, 2 year, $\frac{3}{4}$ to 1 in. diam., 4 to 6 ft.	25	2 00	12 00
1 year, $\frac{5}{8}$ to 1 in. diam., 4 to 6 ft.	25	2 00	12 00
1 year, $\frac{1}{2}$ to $\frac{5}{8}$ in. diam., 3 to 4 ft.	20	1 50	10 00
French (Petite d' Agen), Imperiale Epineuse.			
<b>Prune</b> — On Apricot-French (Petite d' Agen).			
2 year, $\frac{3}{4}$ to 1 in. diam..... 4 to 6 ft.	25	2 00	12 00
2 year, $\frac{5}{8}$ to $\frac{3}{4}$ in. diam..... 3 to 4 ft.	20	1 50	10 00
<b>Peach</b> —On Peach, 1 year, $\frac{5}{8}$ to 1 in. diam.... 4 to 6 ft.	30	2 50	20 00
1 year, $\frac{1}{2}$ to $\frac{5}{8}$ in. diam.... 3 to 4 ft.	25	2 00	18 00
1 year, $\frac{3}{8}$ to $\frac{1}{2}$ in. diam.... 2 to 3 ft.	20	1 75	15 00
Muir, Lovell, Tuscan Cling, Phillip's Cling.			
<b>Peach</b> —On Peach, 1 year, $\frac{5}{8}$ to 1 in. diam.... 4 to 6 ft.	30	2 50	18 00
1 year, $\frac{1}{2}$ to $\frac{5}{8}$ in. diam.... 3 to 4 ft.	25	2 00	15 00
1 year, $\frac{3}{8}$ to $\frac{1}{2}$ in. diam.... 2 to 3 ft.	20	1 50	12 00

**FREESTONE VARIETIES**

(Ripening nearly in the order named.)

Briggs' May, Alexander, Triumph, Admiral Dewey, Amsden's June, Gov. Garland, Yellow St. John, Imperial, Hale's Early, Mountain Rose, Grosse Mignonne, Foster, Early Crawford, George the Fourth, Royal George, Mary's Choice, Morris White, Wager, Wheatland, Newhall, Stump the World, Late Crawford, Lady Palmerston, Susquehanna, Ward's Late, Picquett's Late, Salway.



	Each.	Per 10.	Per 100.
<b>CLINGSTONE VARIETIES</b>			
Large White, Lemon, Seller's, Golden, Runyon's, Nichol's, McDevitt's, California, Heath, George's Late, McDevitt's, Henrietta.			
<b>Nectarine</b> —On Peach, 1 year..... 3 to 5 ft.	30	2 50	18 00
Boston, Early Newington, Hardwick, Lord Napier, New White.			
<b>Apricot</b> —On Apricot, 2 year, $\frac{5}{8}$ to 1 in. diam., 4 to 6 ft.	30	2 50	20 00
2 year, $\frac{1}{2}$ to $\frac{5}{8}$ in. diam., 3 to 4 ft.	25	2 00	18 00
Bergetti, Blenheim, Hemskirke, Large Early Montgamet, Luizet, Moorpark, Newcastle Early, Ouillon's Early, Peach, Royal, Spark's Mammoth, St. Ambroise.			
<b>Apricot</b> —On Apricot, 1 year, $\frac{1}{2}$ to $\frac{3}{4}$ in. diam., 4 to 6 ft.	30	2 50	20 00
1 year, $\frac{1}{2}$ to $\frac{5}{8}$ in. diam., 3 to 4 ft.	25	2 00	18 00
1 year, $\frac{3}{8}$ to $\frac{1}{2}$ in. diam., 2 to 3 ft.	20	1 80	15 00
Blenheim, Hemskirke, Moorpark, Royal.			
<b>Apricot</b> —On Myrobolan,			
2 year, $\frac{5}{8}$ to 1 in., diam..... 4 to 6 ft.	30	2 50	20 00
2 year, $\frac{1}{2}$ to $\frac{5}{8}$ in., diam..... 3 to 4 ft.	25	2 00	18 00
Blenheim, Bergetti, Hemskirke, Large Early Montgamet, Luizet, Moorpark, Ouillon's Early, Newcastle, Peach, Royal, St. Ambroise, Spark's Mammoth.			
<b>Apricot</b> —On Myrobolan,			
1 year, $\frac{1}{2}$ to 1 in. diam..... 4 to 6 ft.	30	2 50	20 00
1 year, $\frac{1}{2}$ to $\frac{5}{8}$ in. diam..... 3 to 4 ft.	25	2 00	18 00
1 year, $\frac{3}{8}$ to $\frac{1}{2}$ in. diam..... 2 to 3 ft.	20	1 80	15 00
Blenheim, Hemskirke, Moorpark, Royal.			
<b>Apricot</b> —On Peach, 2 year, $\frac{5}{8}$ to 1 in. diam., 4 to 6 ft.	30	2 50	20 00
2 year, $\frac{1}{2}$ to $\frac{5}{8}$ in. diam., 3 to 4 ft.	25	2 00	18 00
Bergetti, Blenheim, Hemskirke, Large Early Montgamet, Moorpark, Newcastle Early, Ouillon's Early, Peach, Royal, St. Ambroise.			
<b>Quince</b> —On Quince..... 4 to 6 ft.	25	2 00	15 00
Apple (or Orange), Champion, Chinese, Meech's Prolific, Portugal, Rea's Mammoth.			
<b>Fig</b> —Smyrna, 1 year..... 3 to 5 ft.	50	4 00	
1 year..... 2 to 3 ft.	40	3 50	
1 year..... 1 to 2 ft.	35	3 00	
<b>Fig</b> —Capri, 1 year..... 3 to 5 ft.	60	5 00	
1 year..... 2 to 3 ft.	50	4 00	



	Each.	Per 10.	Per 100.
<b>Fig</b> —In Variety.....4 to 6 ft.	50	4 00	
.....3 to 4 ft.	40	3 00	
.....2 to 3 ft.	30	2 50	
.....1 to 2 ft.	25	2 00	
Adriatic, Agen, Angelique, Brunswick, Black Ischia, Bourjasotte Blanc, Brown Turkey, California Black, Celeste, Col. di Signora Nero, Drap d'Or, Du Roi, Grossale, Ladaro, Negro Largo, Ronde Noir, Ronde Violet Hative, Royal Vineyard, San Pedro, White Genoa, White Ischia, White Marseilles.			
<b>Fig</b> —New, Dauphine.....2 to 3 ft.	75		
.....1 to 2 ft.	50		
<b>Fig</b> —California Black.....8 to 10 ft.	1 00	7 50	
.....6 to 8 ft.	75	6 00	
<b>Almond</b> —On Almond, 1 year.....4 to 6 ft.	30	2 50	18 00
1 year.....3 to 4 ft.	25	2 00	15 00
Drake's Seedling, IXL., Languedoc, Lewelling, King's Soft Shell, Ne Plus Ultra, Nonpareil, Paper Shell, Princesse.			
<b>Butternut</b> .....4 to 6 ft.	50		
.....3 to 4 ft.	40		
.....2 to 3 ft.	25		
<b>Chestnut</b> —American Sweet .....3 to 4 ft.	50		
Italian, or Spanish.....12 to 14 ft.	1 00	7 50	
.....10 to 12 ft.	75	5 00	
.....8 to 10 ft.	60	4 50	
.....6 to 8 ft.	50	4 00	
.....4 to 6 ft.	40	3 00	
.....3 to 4 ft.	30	2 50	
Japan, grafted.....3 to 4 ft.	50	4 00	
Grafted Varieties .....6 to 8 ft.	1 00		
.....4 to 6 ft.	75		
.....3 to 4 ft.	60		
.....2 to 3 ft.	40		
Early Maron, Fox' Prolific, Maron Combale, Maron de Lyon, Noir Hative, Variegated-leaved.			
<b>Filberts</b> .....3 to 4 ft.	50		
.....2 to 3 ft.	40		
Fertile de Coutard, Merville de Bolwiller, Nottingham Prolific, Precoce de Frauendorf, Prolific Cob, Purple-leaved.			
<b>Pecans</b> .....8 to 10 ft.	1 00		
.....6 to 8 ft.	75		
.....4 to 6 ft.	60	5 00	
.....3 to 4 ft.	50	4 00	



	Each.	Per ro.
<b>Pistachio Nut</b> ( <i>Pistacia Vera</i> ) ..... 1 to 2 ft.	50	
<b>Walnut</b> —American Black, Trans..... 4 to 6 ft.	50	4 00
..... 3 to 4 ft.	40	3 00
..... 2 to 3 ft.	25	2 00
California Black, Trans..... 10 to 12 ft.	75	
..... 8 to 10 ft.	60	5 00
..... 6 to 8 ft.	50	4 00
..... 4 to 6 ft.	40	3 00
Ford's Improved Soft Shell, Transplanted ..... 4 to 6 ft.	50	4 00
..... 3 to 4 ft.	40	3 00
..... 2 to 3 ft.	25	2 00
Præparturien, Trans. .... 6 to 8 ft.	60	5 00
..... 4 to 6 ft.	50	4 00
..... 3 to 4 ft.	40	3 00
..... 2 to 3 ft.	25	2 00
Santa Barbara Soft Shell, Trans. 6 to 8 ft.	60	5 00
..... 4 to 6 ft.	50	4 00
..... 3 to 4 ft.	40	3 00
..... 2 to 3 ft.	25	2 00
<b>Walnut</b> —Grafted on English..... 6 to 8 ft.	1 00	
..... 4 to 6 ft.	75	
..... 3 to 4 ft.	50	
Chaberte, Cut-leaved, Franquette, Parisienne, Vourey, Mayette Rouge.		
<b>Walnut</b> —Grafted on California Black  ..... 6 to 8 ft.	1 00	
..... 4 to 6 ft.	75	
..... 3 to 4 ft.	60	
..... 2 to 3 ft.	50	
A. Bijou, Chaberte, Cut-leaved, Franquette, Mayette, Parisienne, Mayette Rouge, Vourey.		
<b>Walnut</b> —Seedlings, Trans..... 6 to 8 ft.	75	5 00
..... 4 to 6 ft.	50	4 00
..... 3 to 4 ft.	40	3 00
..... 2 to 3 ft.	25	2 00
A. Bijou, Chaberte, Franquette, Serotina, or St. John, Vourey.		
<b>Orange</b> —Boxed..... 6 to 7 ft.	4 00	
Hart's Tardiff, Jaffa, Med. Sweet, Ruby Blood.		



	Each.
<b>Orange</b> —Balled, Stocky-branched,	
1½ to 2 in. diam.....	5 to 6 ft. 2 50
1 to 1½ in. diam.....	4 to 5 ft. 1 50
5⁄8 to 1 in. diam.....	3 to 4 ft. 1 25
1⁄2 to 5⁄8 in. diam. ....	2 to 3 ft. 1 00
Hart's Tardiff, Homossassa, Jaffa, Joppa, Maltese Blood, Med. Sweet, Mandarin, Parson Brown, Ruby Blood, St. Michael, Satsuma (Unshiu), Seville, Sicily, Silette, Thompson's Improved Wash. Navel, Tangerine, Valencia Late, Washington Navel.	
<b>Lemon</b> —Balled, 1 to 1½ in. diam... ..	4 to 5 ft. 1 50
5⁄8 to 1 in. diam.....	3 to 4 ft. 1 25
1⁄2 to 5⁄8 in. diam.....	2 to 3 ft. 1 00
Eureka, Genoa, Lisbon, Sicily, Villa Franca.	
<b>Limes</b> —3-inch pot.....	15 to 18 in. 50
<b>Pomelo</b> (Grape Fruit) .....	4 to 5 ft. 1 50
.....	3 to 4 ft. 1 25
.....	2 to 3 ft. 1 00
Seedless, Triumph, Florida Seedling.	
<b>Persimmon</b> —Japan ... ..	3 to 4 ft. 50
.....	2 to 3 ft. 40
American .....	2 ft. 50
<b>Pomegranate</b> —Sweet-fruited and sub-acid..	3 to 4 ft. 50
..	2 to 3 ft. 40
Sub-acid .....	4 to 6 ft. 60
Paper Shell and Spanish Ruby.	
.....	4 to 6 ft. 60
.....	3 to 4 ft. 50
Paper Shell .....	2 to 3 ft. 40
Dessia, Radinar, Hermosilla.	
.....	4 to 6 ft. 60
.....	3 to 4 ft. 50
<b>Guava</b> —Strawberry, balled.....	15 to 18 in. 50
4-inch pot .....	1½ to 2 ft. 50
<b>Carob Tree</b> —6-inch pot.....	3 to 4 ft. 75
5-inch pot .....	2 to 3 ft. 50
<b>Hovenia</b> —Dulcis.....	8 to 10 ft. 50
<b>Loquat</b> —Common (Seedlings), boxed... ..	8 to 10 ft. 2 50
balled .....	6 to 8 ft. 1 50
balled .....	4 to 6 ft. 1 00
5-inch pot.....	2½ to 3 ft. 50
Giant, 12x12-inch box.....	3 ft. 1 50
balled .....	3 to 4 ft. 1 00
balled .....	2 to 3 ft. 75
Large-fruited, balled .....	4 to 6 ft. 1 00
balled .....	3 to 4 ft. 75
balled .....	2 to 3 ft. 50



	Each.	Per 10.	Per 100.
<b>Mulberry</b> —Downings ..... 8 to 10 ft.	75		
..... 6 to 8 ft.	60		
..... 4 to 6 ft.	50		
Lick's American ..... 8 to 10 ft.	75		
..... 6 to 8 ft.	50		
New American ..... 8 to 10 ft.	75		
..... 6 to 8 ft.	50		
..... 4 to 6 ft.	40		
Persian ..... 3 to 4 ft.	60		
..... 2 to 3 ft.	50		
Russian ..... 10 to 12 ft.	60		
..... 8 to 10 ft.	50		
..... 6 to 8 ft.	40		
<b>Medlar</b> —Nottingham .. 4 to 6 ft.	50		
<b>Juneberry</b> —Success ..... 2 to 3 ft.	50		
<b>Olive</b> —Grafted sorts, $1\frac{1}{4}$ to $1\frac{3}{4}$ in. diam..... 6 to 8 ft.	75		
1 to $1\frac{1}{4}$ in. diam..... 4 to 6 ft.	60	5 00	40 00
$\frac{1}{2}$ to 1 in. diam..... 3 to 4 ft.	50	4 00	30 00
$\frac{1}{2}$ in. diam..... 2 to 3 ft.	35	3 00	25 00
Ascolano, Bella di Spagna, Calamignara, Columella, Coregiola, Cucco, Da Salare, Giarraffa, Grantois, Gordal, Manzanillo, Morinello, Nevadillo Blanco, Oliviere, Pendoulier, Piangente, Picholin d' Aix, Regalis, Rubra, St. Augustino, Santa Catarina, Sevillano (True Spanish Queen), Uvaria, Verdale.			
<b>Olive</b> —Mission, $1\frac{1}{4}$ to $1\frac{3}{4}$ in. diam..... 6 to 8 ft.	75	6 00	
1 to $1\frac{1}{4}$ in. diam..... 4 to 6 ft.	50	4 00	30 00
$\frac{1}{2}$ to 1 in. diam..... 3 to 4 ft.	40	3 00	25 00
$\frac{1}{2}$ in. diam..... 2 to 3 ft.	25	2 00	18 00
<b>Grapes</b> —Foreign, \$25 per 1000 ..... 20	20	1 00	5 00
Almeria, Berger, Black Ferrara, Black Hamburg, Black Malvoise, Black Prince (see Rose of Peru), Buckland's Sweetwater, California or Mission, Carginan, Charbono, Chasselas Rose, Cornichon, Early Silver Frontignon, Emperor, Flame Tokay, Franken Riessling, Golden Chasselas, Grenache, Gros Colmar, Lady Downs, Ladyfinger, Malaga, Muscat of Alexander, Muscat Hamburg, Mataro, Purple Damascus, Rose of Peru (Black Prince), Royal Muscadine, Sultana, Souvignon Blanc, Thompson's Seedless, Verdel, White Frontignon, White Sweetwater (Chasselas Fontainebleau), White Tokay, Zante, Zinfandel.			
<b>Grapes</b> —American..... 25	25	1 50	6 00
Barry, Catawba, Concord, Delaware, Diamond, Duchesse, Iona, Isabella, Jefferson, Moore's Early, Niagara, Pierce, Rebecca, Worden, Wyoming Red.			



	Each.	Per ro.	Per 100.
<b>Grapes—Resistant Sorts.</b>			
For description of the following varieties of Resisting Vines, and for information as to the best kinds suitable to certain soils, send for our catalogue No. 4.			
Alicante X Rupestris, No. 20 .....	75		
Aramon X Rupestris-Ganzin, No. 1.....	50	4 00	
Aramon X Rupestris-Ganzin, No. 2.....	50	4 00	
Berlandieri X Rupestris, No. 219 A.....	50	4 00	
Berlandieri X Rupestris, No. 301 A.....	50	4 00	
Berlandieri X Riparia, No. 420 A.....	50	4 00	
Bourisquou X Rupestris, No. 601 .....	50	4 00	
Champini, or Rupestris X Candicans.....	25	1 50	6 00
Clairette doree Ganzin.....	75		
Cabernet X Berlandieri, No. 333 (Tisserand)...	75		
Gamay X Couderc (Columbeau X Rupertris), No. 3103.....	50	4 00	
Hybrid Franc .. .....	50	2 50	
Hybrid Seibel, No.1.....	50	4 00	
Hybrid Seibel, No. 2.....	50	4 00	
Lenoir .....	20	1 00	3 50
Morvedre X Rupestris, No. 1202, .....	50	4 00	
Riparia.. .....	15	50	2 50
Riparia, a grandes Feuilles.....	20	1 00	3 50
Riparia, Gloire de Montpellier....	20	1 00	3 50
Riparia, Grand Glabra .....	50	4 00	
Riparia, Rupestris, No 101-14 (Millardet).....	50	4 00	
Riparia, X Rupestris, No. 3306.....	50	4 00	
Riparia X Rupestris Martin, No. 3309.....	50	4 00	
Rupestris .....	20	75	3 00
Rupestris des Caussettes .....	25	1 50	5 00
Rupestris Martin.....	50	4 00	
Rupestris Metallica.....	25	1 50	5 00
Rupestris Mission.....	25	1 50	5 00
Rupestris St. George .....	20	1 50	3 50
Solonis .....	15	75	3 00
Solonis X Riparia, No. 1616.....	50	4 00	
Solonis Robusta.....	20	1 50	3 50
Solonis X Othello, No. 1613.....	75		
<b>Grapes—Grafted on Lenoir.....</b>	50	4 00	
Rose of Peru, Verdel, Sultana, White Sweetwater. <i>Grafted on Riparia.....</i>	50	4 00	
Black Hamburg, Flame Tokay, Muscat of Alexander. <i>Grafted on Riparia, a grandes Feuilles.....</i>	50	4 00	
Cornichon, Muscat of Alexander, Thompson's Seedless.			



	Each.	Per 10.	Per 100.
<b>Grapes</b> — <i>Grafted on Gloire de Montpellier</i> .....	50	4 00	
Cornichon, California or Mission, Flame Tokay, Rose of Peru, Royal Muscadine.			
<i>Grafted on Rupestris</i> .....	50	4 00	
Cornichon.			
<i>Grafted on Rupestris St. George</i> .....	50	4 00	
Muscat of Alexander, Thompson's Seedless.			
<i>Grafted on Solonis</i> .....	50	4 00	
Emperor, Flame Tokay, White Sweetwater.			
<b>Eleagnus</b> —Longipes.....	40		
<b>Currants</b> .....	15	1 00	5 00
Black Naples, Cherry, Fay's Prolific, Fertile du Palluau, La Versailles, Lee's Prolific, White Grape.			
<b>Currant</b> —Pomona, New.....	25	2 00	
<b>Gooseberry</b> —Champion, Houghton.....	15	1 00	
Columbus, Downing, Industry, Crown Bob, White Smith.....	25	2 00	
<b>Blackberry</b> .....	10	75	3 00
Crandall's Early, Kittatinny, Lawton, Wilson Jr.			
<b>Blackberry</b> —Mammoth.....	25	2 00	15 00
<b>Dewberry</b> —Lucretia.....	20	1 50	
<b>Logan Berry</b> ..	15	1 00	6 00
<b>Wineberry</b> —Japan.....	15	1 00	
<b>Raspberry</b> —Red Varieties.....	15	1 00	4 00
Cuthbert, Herstine, Franconia, King, Marlboro.			
<b>Raspberry</b> —Yellow, Golden Queen.....	15	1 00	
<b>Raspberry</b> —Black Cap.....	15	1 00	
Gregg, Mammoth Cluster, Ohio, Souhegan, Black Diamond, Hilborn, Kansas.			
<b>Strawberry</b> .....		50	2 00
Australian Crimson, Bismarck, Brandywine, Greenville, Haverland, Laxter's Noble, Longworth's Prolific, Malinda, Marshall, Sharpless, Saunders.			
<b>Asparagus</b> —Conover's Colossal, Palmetto, and Mam- moth, 2 year.....		50	3 00
<b>Rhubarb</b> —Myatt's Linnaeus and Lorenzo.....	25	1 50	10 00
Linnaeus Seedlings.....	15	1 00	6 00
Early Prince and Golden Syrup.....	25	2 00	
<b>Hop Roots</b> .....		50	
Male.....	25		
<b>Horse-radish</b> .....	15	1 00	
<b>Liquorice</b> ( <i>Glycyrrhiza glabra</i> ).....	25		
<b>Sage, Thyme, Rue, Lavender, Caper</b> .....	25		
<b>Opuntia Ficus</b> (Indian Fig Cactus)—6-inch pot.....	40		

ORNAMENTAL DEPARTMENT

*Deciduous • Ornamental • Trees*

TRAINED TREES

This class includes a variety of large-sized trees, whose straight, regular stems were headed back or cut down to a uniform height of nine feet, and handsome, well-formed heads grown thereon. They are in splendid shape for planting on avenues, streets, or roadsides, for immediate effect. With ordinary care, little or no loss should occur in moving them, as they have been frequently transplanted.

	Inches in Diameter.	Each.	Per 10.
<b>Ash</b> —American .....	4 to 6	1 50	
.....	3 to 4	1 25	
.....	2½ to 3	1 00	
.....	2 to 2½	75	
European .. .. .	2½ to 3	1 50	
.....	2 to 2½	1 25	
<b>Chestnut</b> —Italian .....	3 to 4	1 50	12 00
.....	2½ to 3	1 25	10 00
<b>Elm</b> —American.. ....	4 to 6	2 00	15 00
.....	3 to 4	1 50	12 00
.....	2½ to 3	1 25	10 00
.....	2 to 2½	1 00	9 00
English or French .....	4 to 6	2 00	15 00
.....	3 to 4	1 50	12 00
.....	2½ to 3	1 25	10 00
.....	2 to 2½	1 00	9 00
.....	1½ to 2	75	6 00
Cork-barked .....	4 to 6	2 00	15 00
.....	3 to 4	1 50	12 00
.....	2½ to 3	1 25	10 00
.....	2 to 2½	1 00	9 00
.....	1½ to 2	75	6 00



	Inches in Diameter.	Each.	Per 10.
<b>Elm</b> —Huntingdon .....	3 to 4	1 50	
.....	2½ to 3	1 25	
.....	2 to 2½	1 00	
Purple-leaved .....	3 to 4	1 25	
.....	2½ to 3	1 00	
Variegated .....	3 to 4	1 50	
.....	2½ to 3	1 25	
.....	2 to 2½	1 00	
<b>Horse Chestnut</b> —Red-flowering .....	2½ to 3	2 00	
.....	2 to 2½	1 50	
White-flowering .....	4 to 6	2 50	20 00
.....	3 to 4	2 00	15 00
.....	2½ to 3	1 50	12 00
.....	2 to 2½	1 25	10 00
<b>Linden</b> —European .....	3 to 4	2 00	
.....	2½ to 3	1 50	
.....	2 to 2½	1 25	
<b>Locust</b> —Bessoniana (Thornless) .....	3 to 4	1 50	12 00
.....	2½ to 3	1 00	7 50
.....	2 to 2½	75	6 00
<b>Maple</b> —English Cork .....	2½ to 3	1 25	10 00
.....	2 to 2½	1 00	
Norway .....	2½ to 3	1 50	
.....	2 to 2½	1 00	
Oregon .....	4 to 6	2 00	15 00
.....	3 to 4	1 50	12 00
.....	2½ to 3	1 25	10 00
.....	2 to 2½	1 00	7 50
.....	1½ to 2	75	6 00
Sycamore .....	2 to 2½	1 00	7 50
<b>Oak</b> —English .....	2 to 2½	1 50	
<b>Paulownia</b> —Imperialis .....	4 to 6	3 00	
.....	3 to 4	2 00	
.....	2½ to 3	1 50	
<b>Poplar</b> —Carolina .....	2½ to 3	1 25	
<b>Sophora</b> —Japonica .....	4 to 6	3 00	
.....	3 to 4	2 00	
<b>Sycamore</b> —European .....	2 to 2½	2 00	
.....	1½ to 2	1 50	
<b>Walnut</b> —American Black .....	3 to 4	2 00	

# Deciduous Ornamental Trees

## GENERAL ASSORTMENT

	Each.
<b>Acacia</b> —Juilibrissin..... 4 to 6 ft. ....	75
..... 2 to 3 ft. ....	50
<b>Apple</b> —Bechtel's Double Rose..... 2 to 3 ft. ....	50
Flowering, Assorted..... 6 to 8 ft. ....	75
..... 4 to 6 ft. ....	60
..... 3 to 4 ft. ....	50
Atropurpureum, pink; Carneo Pleno, flesh colored, flowers double; Coronaria Odorata, Fragrant Garland-flowering, Double Red-flowering.	
<b>Almond</b> —Large double-flowering..... 4 to 6 ft. ....	50
<b>Apricot</b> —Double-flowering..... 6 to 8 ft. ....	75
..... 4 to 6 ft. ....	50
<b>Ash</b> —American..... 10 to 12 ft. ....	75
..... 6 to 8 ft. ....	60
..... 4 to 6 ft. ....	50
European..... 12 to 14 ft. ....	1 00
..... 10 to 12 ft. ....	75
..... 8 to 10 ft. ....	60
..... 6 to 8 ft. ....	50
..... 4 to 6 ft. ....	40
Flowering (Ornus)..... 4 to 6 ft. ....	75
..... 3 to 4 ft. ....	50
<b>Beech</b> —Purple-leaved..... 6 to 8 ft. ....	3 00
..... 4 to 6 ft. ....	2 00
..... 3 to 4 ft. ....	1 50
European..... 4 to 6 ft. ....	75
..... 3 to 4 ft. ....	50
<b>Birch</b> —European White..... 8 to 10 ft. ....	60
..... 6 to 8 ft. ....	50
..... 4 to 6 ft. ....	40
Cut-leaved, see Weeping Trees,	
Upright..... 12 to 14 ft. ....	1 50
..... 10 to 12 ft. ....	1 00
..... 8 to 10 ft. ....	75



		Each.
<b>Buckeye—Ohio</b> .....	6 to 8 ft. ....	1 00
.....	4 to 6 ft. ....	75
.....	3 to 4 ft. ....	50
<b>Catalpa—Bungii</b> .....	6 to 8 ft. ....	50
.....	4 to 6 ft. ....	40
Speciosa.....	6 to 8 ft. ....	50
.....	4 to 6 ft. ....	40
Syringafolia.....	6 to 8 ft. ....	50
.....	4 to 6 ft. ....	40
<b>Butternut</b> .....	4 to 6 ft. ....	50
.....	3 to 4 ft. ....	40
.....	2 to 3 ft. ....	25
<b>Chestnut—Italian, or Spanish</b> .....	12 to 14 ft., per 10, \$7 50	1 00
.....	10 to 12 ft., per 10, \$5 00	75
.....	8 to 10 ft., per 10, \$4 50	60
.....	6 to 8 ft., per 10, \$4 00	50
.....	4 to 6 ft., per 10, \$3 00	40
.....	3 to 4 ft., per 10, \$2 50	30
<b>Dymorphantus—Mandschuricus</b> .....	6 to 8 ft. ....	75
<b>Elm—American</b> .....	8 to 10 ft., per 10, \$6 00	75
.....	6 to 8 ft., per 10, \$4 00	50
.....	4 to 6 ft., per 10, \$3 00	40
English, or French.....	12 to 14 ft., per 10, \$7 50	1 00
.....	10 to 12 ft., per 10, \$6 00	75
.....	8 to 10 ft., per 10, \$4 00	50
.....	6 to 8 ft., per 10, \$3 00	40
Cork Barked.....	12 to 14 ft., per 10, \$6 00	75
.....	10 to 12 ft., per 10, \$5 00	60
.....	8 to 10 ft., per 10, \$4 00	50
.....	6 to 8 ft., per 10, \$3 00	40
Huntingdon.....	10 to 12 ft. ....	75
.....	8 to 10 ft. ....	50
Monumentalis. ....	6 to 8 ft. ....	75
.....	4 to 6 ft. ....	50
Purple-leaved.....	12 to 14 ft. ....	1 00
.....	10 to 12 ft. ....	75
.....	8 to 10 ft. ....	50
Cuculata.....	12 to 14 ft. ....	1 00
.....	10 to 12 ft. ....	75
.....	6 to 8 ft. ....	50
Wheatley's.....	12 to 14 ft. ....	75
.....	10 to 12 ft. ....	50
<b>Horse Chestnut—Red-flowering</b> .....	6 to 8 ft. ....	1 00
.....	4 to 6 ft. ....	75
.....	3 to 4 ft. ....	50

	Each.
<b>Horse Chestnut</b> —White-flowering .....	1 00
..... 10 to 12 ft. ....	
..... 8 to 10 ft. ....	75
..... 6 to 8 ft. ....	50
..... 2 to 3 ft. ....	40
<b>Judas Tree</b> —White-flowering.....	1 00
..... 8 to 10 ft. ....	
..... 6 to 8 ft. ....	75
<b>Laburnum</b> .....	75
..... 10 to 12 ft. ....	
..... 8 to 10 ft. ....	50
..... 6 to 8 ft. ....	40
<b>Larch</b> —European, 5-inch pot. ....	50
Japan, 5-inch pot.....	50
<b>Linden</b> —American.....	75
..... 8 to 10 ft. ....	
..... 6 to 8 ft. ....	60
..... 4 to 6 ft. ....	50
European.....	1 00
..... 10 to 12 ft. ....	
..... 8 to 10 ft. ....	75
..... 6 to 8 ft. ....	60
..... 4 to 6 ft. ....	50
<b>Liquid Amber</b> .....	75
..... 2 to 3 ft. ....	
..... 1 to 2 ft. ....	50
<b>Locust</b> —Bessoniana (Thornless).....	75
..... 12 to 14 ft., per 10, \$6 00	
..... 10 to 12 ft., per 10, \$4 00	50
..... 8 to 10 ft. ....	40
Common, or Black.....	75
..... 12 to 14 ft. ....	
..... 10 to 12 ft., per 10, \$5 00	60
..... 8 to 10 ft., per 10, \$4 00	50
..... 6 to 8 ft., per 10, \$3 00	40
..... 4 to 6 ft., per 10, \$2 00	25
Decaisneana (Pink-flowering).....	75
..... 10 to 12 ft. ....	
..... 6 to 8 ft. ....	50
Honey.....	50
..... 10 to 12 ft. ....	
..... 8 to 10 ft. ....	40
Thornless Honey.....	75
..... 10 to 12 ft. ....	
..... 8 to 10 ft. ....	50
Japan Honey.....	75
..... 10 to 12 ft. ....	
..... 8 to 10 ft. ....	50
Neo Mexicana (Red-flowering)..	75
..... 8 to 10 ft. ....	
<b>Magnolia</b> —Acuminata.....	1 00
..... 10 to 12 ft. ....	
..... 8 to 10 ft. ....	75
..... 6 to 8 ft. ....	50
<b>Maiden Hair Tree</b> .....	1 00
..... 6 to 8 ft. ....	
..... 4 to 6 ft. ....	75
..... 3 to 4 ft. ....	50
<b>Maple</b> —California .....	30
..... 6 to 8 ft., per 10, \$2 50	
..... 4 to 6 ft., per 10, \$2 00	25
English Cork.....	75
..... 12 to 14 ft. ....	
..... 10 to 12 ft. ....	50



		Each.
<b>Maple—Norway</b> .....	12 to 14 ft. ....	75
.....	6 to 8 ft. ....	50
Oregon.....	12 to 14 ft., per 10, \$6 00	75
.....	10 to 12 ft., per 10, \$5 00	60
.....	8 to 10 ft., per 10, \$4 00	50
.....	6 to 8 ft., per 10, \$3 00	40
Reitembachii.....	6 to 8 ft. ....	1 00
.....	4 to 6 ft. ....	75
Scarlet.....	6 to 8 ft. ....	75
.....	4 to 6 ft. ....	50
Schwedlerii (Purple-leaved).....	10 to 12 ft. ....	1 00
.....	8 to 10 ft. ....	75
.....	6 to 8 ft. ....	60
.....	4 to 6 ft. ....	50
Silver or Soft.....	10 to 12 ft., per 10, \$6 00	75
.....	8 to 10 ft., per 10, \$5 00	60
.....	6 to 8 ft., per 10, \$4 00	50
.....	4 to 6 ft., per 10, \$3 00	40
Sugar.....	12 to 14 ft. ....	1 50
.....	10 to 12 ft. ....	1 00
.....	8 to 10 ft. ....	75
.....	6 to 8 ft. ....	60
.....	4 to 6 ft. ....	50
Sycamore.....	12 to 14 ft., per 10, \$6 00	75
.....	10 to 12 ft., per 10, \$5 00	60
.....	8 to 10 ft., per 10, \$4 00	50
.....	6 to 8 ft., per 10, \$3 00	40
Weir's Cut-leaved.....	10 to 12 ft. ....	1 00
.....	8 to 10 ft. ....	75
.....	6 to 8 ft. ....	50
<b>Mountain Ash—European</b> .....	10 to 12 ft. ....	75
.....	8 to 10 ft. ....	60
.....	6 to 8 ft. ....	50
Oak-leaved.....	8 to 10 ft. ....	75
.....	6 to 8 ft. ....	50
<b>Mulberry—Downing</b> .....	8 to 10 ft. ....	75
.....	6 to 8 ft. ....	60
.....	4 to 6 ft. ....	50
Lick's American.....	8 to 10 ft. ....	75
.....	6 to 8 ft. ....	50
Multicaulis.....	8 to 10 ft. ....	50
.....	6 to 8 ft. ....	40
New American.....	8 to 10 ft. ....	75
.....	6 to 8 ft. ....	50
.....	4 to 6 ft. ....	40
Persian.....	3 to 4 ft. ....	60
.....	2 to 3 ft. ....	50

		Each.
<b>Mulberry—Russian.</b>	10 to 12 ft.	60
	8 to 10 ft.	50
	6 to 8 ft.	40
White (Alba)	10 to 12 ft.	60
	8 to 10 ft., per 10, \$4 00	50
	6 to 8 ft., per 10, \$3 00	40
	4 to 6 ft., per 10, \$2 50	30
<b>Oak—California Weeping.</b>	2 to 3 ft., per 10, \$3 00	40
	3 to 4 ft.	50
California White	2 to 3 ft., per 10, \$4 00	50
Cut-leaved	6 to 8 ft.	1 00
	4 to 6 ft.	75
English	10 to 12 ft.	75
Red	8 to 10 ft.	1 00
	6 to 8 ft.	75
	4 to 6 ft.	60
Scarlet	8 to 10 ft.	1 00
	6 to 8 ft.	75
	4 to 6 ft.	50
Serrata	2 to 3 ft.	50
Turkey	10 to 12 ft.	1 00
	8 to 10 ft.	75
Burr	10 to 12 ft.	1 00
	8 to 10 ft.	75
	6 to 8 ft.	50
<b>Paulownia—Imperialis</b>	10 to 12 ft.	1 25
	8 to 10 ft.	1 00
	6 to 8 ft.	75
<b>Peach—Flowering</b>	4 to 6 ft.	50
Blood-leaved, Double Red-flowering, Double Rose-flowering, Early Red-flowering, Double White-flowering.		
<b>Pecans</b>	8 to 10 ft.	1 00
	6 to 8 ft.	75
	4 to 6 ft., per 10, \$5 00	60
	3 to 4 ft., per 10, \$4 00	50
<b>Plum—Double-flowering (Spinosa)</b>	8 to 10 ft.	75
	6 to 8 ft.	50
Purple-leaved (Pissardi)	6 to 8 ft.	60
	4 to 6 ft., per 10, \$4 00	50
	3 to 4 ft., per 10, \$3 50	40
<b>Poplar—Carolina</b>	12 to 14 ft., per 10, \$6 00	75
	10 to 12 ft., per 10, \$5 00	60
	8 to 10 ft., per 10, \$4 00	50
	6 to 8 ft., per 10, \$3 00	40
	4 to 6 ft., per 10, \$2 00	30
	3 to 4 ft., per 10, \$1 50	25



			Each.
<b>Poplar—Lombardy</b> .....	10 to 12 ft., per 10,	\$6 00	75
.....	8 to 10 ft., per 10,	\$5 00	60
.....	6 to 8 ft., per 10,	\$4 00	50
.....	4 to 6 ft., per 10,	\$3 00	40
.....	3 to 4 ft., per 10,	\$2 50	30
White or Silver.....	12 to 14 ft., per 10,	\$6 00	75
.....	10 to 12 ft., per 10,	\$5 00	60
.....	8 to 10 ft., per 10,	\$4 00	50
.....	6 to 8 ft., per 10,	\$3 00	40
.....	4 to 6 ft., per 10,	\$2 50	30
Bolleana (Silver-leaved.....	4 to 6 ft. ....		50
.....	3 to 4 ft. ....		40
<b>Sophora—Japonica</b> .....	10 to 12 ft. ....		75
.....	8 to 10 ft. ....		60
.....	6 to 8 ft. ....		50
<b>Sorbus Domestica—(Service Tree)</b> .....	3 to 4 ft. ....		75
.....	2 to 3 ft. ....		50
<b>Sycamore—European</b> .....	12 to 14 ft. ....		1 50
.....	10 to 12 ft., per 10,	\$7 50	1 00
.....	8 to 10 ft., per 10,	\$6 00	75
.....	6 to 8 ft., per 10,	\$5 00	60
.....	4 to 6 ft., per 10,	\$4 00	50
.....	3 to 4 ft., per 10,	\$3 00	40
Variegated.....	10 to 12 ft. ....		75
<b>Texas Umbrella</b> .....	6 to 7 ft., per 10,	\$6 00	75
.....	5 to 6 ft., per 10,	\$5 00	60
.....	4 to 5 ft., per 10,	\$4 00	50
.....	3 to 4 ft., per 10,	\$3 00	40
<b>Thorns</b> .....	10 to 12 ft., per 10,	\$7 50	1 00
.....	8 to 10 ft., per 10,	\$6 00	75
.....	6 to 8 ft., per 10,	\$5 00	60
.....	4 to 6 ft., per 10,	\$4 00	50
.....	3 to 4 ft., per 10,	\$3 50	40
Cockspur, Double White, Paul's Double Scarlet, Pyramidal, Rubra Splendens, Single White.			
<b>Tulip Tree</b> .....	12 to 14 ft. ....		1 00
.....	10 to 12 ft. ....		75
.....	6 to 8 ft. ....		50
.....	2 to 3 ft. ....		40
<b>Walnut—American Black</b> .....	4 to 6 ft., per 10,	\$4 00	50
.....	3 to 4 ft., per 10,	\$3 00	40
.....	2 to 3 ft., per 10,	\$2 00	25
California Black.....	10 to 12 ft. ....		75
.....	8 to 10 ft., per 10,	\$5 00	60
.....	6 to 8 ft., per 10,	\$4 00	50
.....	4 to 6 ft., per 10,	\$3 00	40





## Evergreen Trees and Shrubs

Nearly all the plants mentioned under this heading have been transplanted once or oftener, thereby adding greatly to the certainty of their growing. In order to reduce the amount of soil and consequent high freight charges, especially in shipping to distant points, we have grown those varieties most in demand in pots.

		Each.
<b>Acacia</b> —Armata, 4-inch pot.....	2 to 3 ft.	50
Cultriformis, 5-inch pot.....	4 to 5 ft.	50
3-inch pot.....	2 to 3 ft.	40
Cyanophylla, 6-inch pot.....	6 to 8 ft.	40
Dealbata, 6-inch pot.....	5 to 6 ft.	50
5-inch pot.....	3 to 4 ft.	40
Glaucescens, 6-inch pot.....	6 to 8 ft.	50
5-inch pot.....	4 to 6 ft.	40
Leucophylla, 5-inch pot.....	4 to 6 ft.	50
Latifolia, 5-inch pot.....	4 to 6 ft.	50
4-inch pot.....	3 to 4 ft.	40
3-inch pot.....	1½ to 2 ft.	25
Lopantha, 3-inch pot.....	1 to 1½ ft.	40
Macrademia, 4-inch pot.....	2 to 3 ft.	75
Melanoxylon, 6-inch pot.....	4 to 6 ft.	50
6-inch pot.....	3 to 4 ft.	40
10x10-inch box.....	7 to 8 ft.	1 00
10x10-inch box.....	5 to 6 ft.	80
Mollissima, 6-inch pot.....	5 to 6 ft.	60
5-inch pot.....	4 to 5 ft.	40
10x12-inch box.....	6 to 8 ft.	1 00
Odoratissima, 4-inch pot.....	1½ to 2 ft.	50
Pinifolia, 5-inch pot.....	5 to 6 ft.	50
4-inch pot.....	3 to 4 ft.	40
Pycnantha, 10x12-inch box.....	6 to 8 ft.	1 00
6-inch pot.....	4 to 6 ft.	50
4-inch pot.....	1½ to 2 ft.	40
4-inch pot.....	12 to 15 in.	30
Retinoides Florabunda, 5-inch pot.....	5 to 6 ft.	60
4-inch pot.....	4 to 5 ft.	50
4-inch pot.....	3 to 4 ft.	40
Sauveolens, 10x10-inch box.....	8 to 9 ft.	1 00
6-inch pot.....	6 to 8 ft.	50
5-inch pot.....	4 to 6 ft.	40

		Each.
<b>Acacia</b> —Trovissima, 5-inch pot.....	2 to 2½ ft.	75
Verticellata, 5-inch pot.....	4 to 5 ft.	50
4-inch pot.....	3 to 4 ft.	40
<b>Aralia</b> —Sieboldii, 6-inch pot.....	1 to 1½ ft.	75
<b>Araucaria</b> —Bidwellii, 18x24-inch box.....	7 ft.	10 00
9-inch pot.....	2 to 2½ ft.	4 00
6-inch pot.....	15 to 18 in.	1 50
balled.....	4 ft.	6 00
balled.....	3 ft.	5 00
Excelsa, 6-inch pot.....	2 ft.	1 50
5-inch pot.....	15 to 18 in.	1 00
Compacta, 6-inch pot.....	15 in.	3 00
Imbricata, boxed.....	8 ft.	15 00
boxed.....	6 to 7 ft.	12 00
boxed.....	4 to 6 ft.	8 00
balled.....	3 to 4 ft.	4 00
balled.....	2 to 2½ ft.	3 00
balled.....	12 to 15 in.	1 00
<b>Arbor Vitæ</b> —Aurea Damasa, balled.....	2 to 3 ft.	75
Chinese, balled.....	3 to 4 ft.	50
balled.....	2 to 3 ft.	40
Chinese Silver, balled.....	4 to 5 ft.	1 00
Evergolden, balled.....	2 ft.	1 00
George Peabody, balled.....	2 to 3 ft.	1 00
balled.....	1½ ft.	75
Golden, balled.....	3 to 4 ft.	1 00
Japan (Filiformis), balled.....	3 to 4 ft.	1 50
Japan Weeping, balled.....	2 to 2½ ft.	1 50
Siberian, balled.....	2 to 3 ft.	50
<b>Arbutus</b> —Unedo, balled.....	6 to 7 ft.	1 50
balled.....	4 to 5 ft.	75
balled.....	3 to 4 ft.	50
4-inch pot.....	1 to 2 ft.	40
<b>Acuba</b> —Japonica, balled.....	2 to 2½ ft.	1 50
8-inch pot.....	2 to 2½ ft.	1 00
4-inch pot.....	10 to 12 in.	50
Viridis Latifolia, 12x12-inch box.....	3 to 4 ft.	1 50
balled.....	2 to 2½ ft.	1 00
4-inch pot.....	10 to 12 in.	50
<b>Azalea</b> —Indica, 7-inch pot.....	1 to 1½ ft.	1 50
<b>Azara</b> —Microphylla, balled.....	8 to 10 ft.	1 50
<b>Bamboo</b> —Aurea Stricta, balled.....	4 to 6 ft.	1 50
Arundinaria Hindsii, balled.....	4 to 6 ft.	2 00
Falcata, 12x12-inch box, 6 to 10 shoots.....	6 to 8 ft.	2 00
balled, 20 to 25 shoots.....	6 to 8 ft.	2 50
balled, 8 to 10 shoots.....	4 to 6 ft.	75



		Each.
<b>Bamboo</b> —Metake, balled.....	4 to 6 ft.	75
balled.....	3 to 4 ft.	50
Phyllostachys Nigra, balled.....	4 to 6 ft.	1 50
Simonii, balled.....	6 to 8 ft.	2 50
balled.....	4 to 6 ft.	1 00
Tessellata, balled.....	2 to 3 ft.	2 50
Verticellata, balled.....	4 to 6 ft.	2 50
Viridis Striata, balled, 12 to 15 shoots.....	8 to 10 ft.	2 50
balled, 10 to 12 shoots..	6 to 8 ft.	1 50
balled, 6 to 8 shoots.....	4 to 6 ft.	75
Wheelerii, balled, 12 to 15 shoots.....	8 to 10 ft.	3 00
balled, 10 to 12 shoots.....	6 to 8 ft.	2 00
balled, 6 to 8 shoots.....	4 to 6 ft.	1 00
<b>Berberis</b> —Darwinii, balled.....	3 to 4 ft.	75
balled.....	2 to 3 ft.	60
balled.....	1 to 1½ ft.	50
Thunbergii, 4-inch pot.....	1 to 2 ft.	50
Stenophylla, balled.....	1½ to 2 ft.	75
<b>Box</b> —Dwarf, 15 to 18 inch, per 10, \$1.50.....		25
8 to 12 inch, per 10, \$1.00; per 100, \$8.00		20
6 to 8 inch, per 10, \$.75; per 100 \$6.00..		15
Japan, Broad-leaved, balled, per 10, \$2.50.....	2 to 2½ ft.	35
Narrow-leaved, balled, per 10, \$2.50.....	2½ to 3 ft.	35
Sempervirens, balled.....	2 to 3 ft.	1 00
balled, per 10, \$6.00.....	1½ to 2 ft.	75
Argentea, balled.....	3 to 4 ft.	75
balled.....	2 to 3 ft.	50
Arborescens, balled.....	4 to 6 ft.	1 00
balled.....	3 to 4 ft.	75
Oliefolia (olive-leaved), balled, per 10, \$6.00.....	2 to 3 ft.	75
<b>Blue Gum</b> —See Eucalyptus.		
<b>Brachychiton</b> —Diversifolium, balled.....	6 to 8 ft.	1 50
balled.....	4 to 6 ft.	1 00
balled.....	3 to 4 ft.	75
Poplarifolium, balled.....	6 to 8 ft.	1 50
balled.....	4 to 6 ft.	1 00
<b>California Laurel</b> —balled.....	6 to 8 ft.	1 00
balled.....	4 to 6 ft.	75
balled.....	3 to 4 ft.	50
6-inch pot.....	2 to 2½ ft.	50
<b>California Big Tree</b> —boxed.....	6 to 7 ft.	6 00
boxed.....	4 to 6 ft.	5 00
balled.....	1 to 1½ ft.	1 50
6-inch pot.....	1½ to 2 ft.	1 50
5-inch pot.....	10 to 12 in.	1 00
<b>California Nutmeg</b> —balled.....	2 to 2½ ft.	2 00
5-inch pot..	12 to 15 in.	1 00

		Each.
<b>California Wild Cherry</b> —3-inch pot .....	1 to 1½ ft.	50
<b>Camellia</b> —Double Pink, balled .....	3 to 4 ft.	2 50
balled .....	2 to 2½ ft.	1 50
5-inch pot .....	15 to 18 in.	1 00
Double Red, 5-inch pot .....	15 to 18 in.	1 00
Double White, balled .....	3 to 4 ft.	2 50
balled .....	2 to 3 ft.	1 50
5-inch pot .....	15 to 18 in.	1 00
Seedlings, balled .....	4 to 6 ft.	3 00
<b>Camphor Tree</b> —balled .....	1½ to 2 ft.	75
5-inch pot .....	1½ to 2 ft.	50
<b>Cassia</b> —Corymbosa, 5-inch pot .....	3 to 4 ft.	50
Polyantha, 5-inch pot .....	3 to 4 ft.	50
Tomentosa, 5-inch pot .....	3 to 4 ft.	50
<b>Ceanothus</b> —Azureus, 6-inch pot .....	3 to 4 ft.	1 00
Grandiflora, 6-inch pot .....	3 to 4 ft.	1 00
Gloire de Versailles, 6-inch pot .....	3 to 4 ft.	1 00
Thyriflorus, 4-inch pot .....	1½ to 2 ft.	75
<b>Cedar</b> —Atlantica Glauca, 8-inch pot .....	3 to 4 ft.	4 00
6-inch pot .....	2 to 2½ ft.	2 50
Deodora, boxed .....	8 to 9 ft.	8 00
balled .....	2 to 3 ft.	2 00
6-inch pot .....	2 to 2½ ft.	1 00
Lebanon, boxed .....	9 to 10 ft.	8 00
balled .....	4 to 6 ft.	5 00
balled .....	3 to 4 ft.	2 50
balled .....	2 to 3 ft.	1 50
6-inch pot .....	1½ to 2 ft.	1 00
Verticellata Glauca, balled .....	3 to 4 ft.	5 00
6-inch pot .....	1½ to 2 ft.	2 50
<b>Cephalotaxus</b> —Drupacea, balled .....	4 to 5 ft.	1 00
balled .....	3 to 4 ft.	75
Fortunei, balled .....	4 to 5 ft.	1 00
balled .....	3 to 4 ft.	75
<b>Cestrum</b> —Aurantiacum, 6-inch pot .....	2 to 3 ft.	40
Parqui, 5-inch pot .....	2 to 2½ ft.	50
<b>Chamæcyparis</b> —Obtusa Pendula, balled .....	2 to 3 ft.	1 00
<b>Choisya</b> —Ternata, balled .....	3 to 4 ft.	1 00
<b>Corynocarpus</b> —Lævigatus, 10-inch pot .....	3½ to 4 ft.	1 50
<b>Cotoneaster</b> —Microphylla, balled .....	2 to 3 ft.	75
<b>Cratægus</b> —Pyracantha, balled .....	4 to 5 ft.	50
<b>Christmas Berry</b> —balled .....	3 to 4 ft.	1 00
balled .....	2 to 3 ft.	75
<b>Cryptomeria</b> —Araucarioides, balled .....	6 to 8 ft.	2 00
Elegans, balled .....	3 to 4 ft.	1 00
10x12-inch box .....	4 to 5 ft.	1 50
8-inch pot .....	3½ to 4 ft.	75



		Each.	
<b>Cryptomeria</b> —Japonica, balled	6 to 8 ft.	1 00	
	balled	4 to 6 ft. 75	
	balled	3 to 4 ft. 50	
	10x12-inch box	4 to 5 ft. 1 00	
	6-inch pot	3 to 4 ft. 50	
<b>Cunninghamia</b> —Sinensis, balled	4 to 5 ft.	3 00	
<b>Cypress</b> —Funeral, 5-inch pot	2½ to 3 ft.	75	
	Guadalupensis, 5-inch pot	3 to 4 ft. 75	
	Italian, balled	3 to 4 ft. 50	
	balled	2 to 3 ft. 40	
	balled	1½ to 2 ft. 25	
	Lawson's, boxed	8 to 9 ft. 5 00	
	balled	3 to 4 ft. 75	
	balled	2 to 3 ft. 50	
	Argentea, balled	7 to 8 ft. 5 00	
	balled	4 to 6 ft. 1 50	
	Densa, balled	1 to 1½ ft. 1 50	
	Lutea, balled	2 to 3 ft. 1 50	
	Stricta Viridis, boxed	8 ft. 5 00	
	balled	3 to 4 ft. 1 50	
	Monterey, balled, per 10, \$4.00	6 to 7 ft. 50	
	balled, per 10, \$2.50; per 100 \$20	4 to 6 ft. 35	
	balled, per 10, \$1.50; per 100, \$12	2 to 2½ ft. 20	
	3-inch pot, per 10, \$2.00	3 to 4 ft. 25	
	Transplanted in boxes (of 100 each), 2 year, 15 to 18 inch; per box, \$3.00; per 1,000, \$25.		
	Transplanted in boxes (of 100 each), 1 year, 6 to 8 inch; per box, \$2.50; per 1,000, \$20.		
Golden, balled	6 to 8 ft. 2 00		
balled	4 to 6 ft. 1 50		
balled	3 to 4 ft. 75		
6-inch pot	4 to 5 ft. 1 00		
Variegated, balled	4 to 6 ft. 1 00		
6-inch pot	3 to 4 ft. 75		
<b>Daphne</b> —White, balled	4 ft.	3 00	
	balled	1½ to 2 ft. 1 50	
	Variegated, balled	1½ to 2 ft. 1 50	
<b>Deeringea</b> —Variegata, 5-inch pot	2½ to 3 ft.	50	
<b>Diosma</b> —Alba, balled	15 to 18 in.	50	
	4-inch pot	12 to 15 in. 50	
<b>Daphniphyllum</b> —Macropodum, 8-inch pot	3 to 4 ft.	2 00	
<b>Eleagnus</b> —Reflexa Aurea, balled	2½ to 3 ft.	75	
	6-inch pot	2½ to 3 ft. 75	
<b>Escallonia</b> —Berteriana, 5-inch pot	2 to 3 ft.	50	
	3-inch pot	12 to 15 in. 40	

		Each.	
<b>Escallonia</b> —	Leucantha, 5-inch pot .....	2 to 3 ft. 50	
	3-inch pot .....	1 ft. 40	
	Macrantha, 5-inch pot.....	4 to 5 ft. 50	
	3-inch pot .....	15 to 18 in. 40	
	Rubra, 5-inch pot.....	2 to 3 ft. 50	
	3-inch pot .....	12 to 15 in. 40	
<b>Eucalyptus</b> —	Globulus (Blue Gum),		
	6-inch pot, per 10, \$4.00 .....	5 to 6 ft. 50	
	4-inch pot, per 10, \$2.00.....	3 to 4 ft. 25	
	Transplanted in boxes (of 100 each), 2 year, 18 to 24 inch; per box, \$4.00; per 1,000, \$25.		
	Transplanted in boxes (of 100 each), 1 year, 6 to 8 inch; per box, \$2.50; per 1,000, \$20.		
	Viminalis (Red Gum),		
	5-inch pot, per 10, \$2.50.....	4 to 5 ft. 35	
	4-inch pot, per 10, \$2.00; per 100, \$15..	3 to 4 ft. 25	
	Transplanted in boxes (of 100 each), 2 year, 18 to 24 inch; per box, \$4.00.		
	Transplanted in boxes (of 100 each), 1 year old, 6 to 8 inch; per box, \$2.50; per 1,000, \$20.		
	Citridora, 6-inch pot, per 10, \$4.00....	4 to 5 ft. 50	
	5-inch pot, per 10, \$3.50.....	3 to 4 ft. 40	
	Ficifolia (Scarlet-flowering), 3-inch pot ...	12 to 15 in. 50	
	Robusta, 5-inch pot, per 10, \$2.00 .....	4 to 5 ft. 25	
	Viminalis fertilis, 5-inch pot .....	4 to 5 ft. 50	
	Red-flowering, 4-inch pot, per 10, \$6.00 ...	3 to 4 ft. 75	
	<b>Eugenia</b> —Australis, balled.....	2 to 2½ ft. 75	
	<b>Euonymus</b> —	Japonica, balled.....	5 to 6 ft. 50
		balled.....	1½ to 2 ft. 25
		Japonica Aurea, balled.....	5 to 6 ft. 50
balled.. ..		1 to 1½ ft. 25	
Duc d'Anjou, balled.....		5 to 6 ft. 50	
balled.....		1½ to 2 ft. 25	
Golden Margined, balled .....		4 to 5 ft. 50	
balled .....		3 to 4 ft. 40	
balled.....		12 to 15 in. 25	
Radicans, balled .....		2 to 3 ft. 50	
Silver Variegated, balled .....	5 to 6 ft. 75		
	balled .....	1½ to 2 ft. 25	
	12x12-inch box.....	4 to 6 ft. 1 00	
<b>Fabiana</b> —Imbricata, balled.....	3 to 4 ft. 50		
<b>Ficus</b> —Elastica, 6-inch pot .....	2 to 2½ ft. 1 50		
	5-inch pot.....	18 to 24 in. 1 00	
	Macrophylla, 6-inch pot.....	2 to 3 ft. 1 00	
<b>Fontanesia</b> —Phillyroeoides, balled ....	4 to 6 ft. 50		



		Each.
<b>Garrya</b> —Elliptica, 5-inch pot.....	2 to 3 ft.	1 00
<b>Guava</b> —Strawberry, balled.....	15 to 18 in.	50
4-inch .....	1½ to 2 ft.	50
<b>Grevillea</b> —Robusta, 10x10-inch box.....	8 to 9 ft.	1 00
5-inch pot, per 10, \$4.00.....	4 to 5 ft.	50
<b>Habrothamnus</b> —Elegans, 6-inch pot.....	3 to 4 ft.	50
4-inch.....	1 to 1½ ft.	40
Facicularis, 6-inch pot.....	3 to 4 ft.	50
4-inch pot.....	1½ to 2 ft.	40
<b>Heath</b> —Capitata, 3-inch pot .....	12 to 15 in.	50
Mediterranean, 5-inch pot .....	2 to 2½ ft.	50
Multiflora Grandiflora, balled .....	8 to 12 in.	50
Regerminans, 4-inch pot .....	1 to 1½ ft.	50
Vagans Alba, balled .....	8 to 10 in.	50
<b>Holly</b> —European, balled .....	8 ft.	5 00
balled .....	6 to 7 ft.	4 00
balled .....	4 to 6 ft.	2 50
balled .....	3 to 4 ft.	1 50
balled .....	2 to 3 ft.	1 00
<b>Hypericum</b> —Morserianum, balled.....	1½ ft.	50
<b>Juniper</b> —Bermudiana, balled .....	4 to 6 ft.	1 50
balled.....	3 to 4 ft.	1 00
balled, per 10, \$4.00.....	2 to 3 ft.	50
Drupacea, balled .....	2 to 3 ft.	1 00
Irish, balled .....	4 to 6 ft.	1 50
balled.....	3 to 4 ft.	1 00
Japan, balled .....	3 to 4 ft.	1 50
balled .....	1 to 1½ ft.	1 00
Japan Variegated, balled .....	4 to 6 ft.	1 50
balled .....	3 to 4 ft.	1 00
Japan Creeping, balled.....	2 ft.	1 00
Japan Weeping, balled .....	4 to 6 ft.	1 50
balled .....	2 to 2½ ft.	1 00
<b>Laurel</b> —Elliptica, balled.....	6 ft.	1 50
balled.....	3 to 4 ft.	75
English, balled.....	4 to 5 ft.	1 00
balled.....	3 to 4 ft.	75
English Large-leaved, balled.....	3 to 4 ft.	1 00
Camelliafolia, balled .....	4 to 5 ft.	1 00
Portugal, balled.....	2 to 2½ ft.	75
Roduntifolia, balled .....	4 to 5 ft.	1 00
Nobilis, balled.....	6 to 7 ft.	1 50
balled .....	2 to 3 ft.	1 00
5-inch pot.....	2½ to 3 ft.	75

			Each.
<b>Laurestinus</b> —Common,	balled	2 to 3 ft.	50
	balled	1 to 1½ ft.	40
	Grandiflora, balled	12 to 15 in.	50
	Roduntifolia, balled	6 to 8 ft.	1 00
	balled	4 to 6 ft.	75
	balled	1 to 1½ ft.	40
	Variegated, balled	3 to 4 ft.	75
<b>Libocedrus</b> —Chilensis,	balled	4 to 6 ft.	1 50
	balled	3 to 4 ft.	1 00
	Viridis, balled	4 to 6 ft.	1 50
	balled	2 to 3 ft.	75
	Decurrens, boxed	8 to 9 ft.	3 00
	boxed	7 to 8 ft.	1 50
	balled	6 to 7 ft.	1 00
	balled	4 to 6 ft.	75
	balled	3 to 4 ft.	50
<b>Ligustrum</b> —Japonicum,	balled, per 10, \$6.00	6 to 8 ft.	75
	balled, per 10, \$4.00	4 to 6 ft.	50
	balled, per 10, \$2.00	2 to 3 ft.	25
	Sinensis (Chinese), balled	4 to 6 ft.	75
	Tricolor, balled	4 to 6 ft.	75
	Variegated, balled	8 to 10 ft.	1 50
	balled	4 to 6 ft.	75
<b>Loquat</b> —Common,	boxed	8 to 10 ft.	2 50
	balled	6 to 8 ft.	1 50
	balled	4 to 6 ft.	1 00
	5-inch pot	2½ to 3 ft.	50
	Giant, balled	3 to 4 ft.	1 00
	balled	2 to 3 ft.	75
	12x12-inch box	3 ft.	1 50
	Large-fruited, balled	4 to 6 ft.	1 00
	balled	3 to 4 ft.	75
	balled	2 to 3 ft.	50
	Variegated, balled	4 to 5 ft.	1 00
<b>Magnolia</b> —Grandiflora,	20x20-inch box	8 to 10 ft.	6 00
	balled	6 to 8 ft.	1 50
	balled	4 to 6 ft.	1 00
	balled	3 to 4 ft.	75
	5-inch pot	2 to 3 ft.	50
	Crispa, balled	6 to 8 ft.	6 00
	La Gallissonniere, balled	6 to 8 ft.	6 00
	Oxoniensis, double-flowering, boxed	8 to 10 ft.	6 00
	balled	4 to 6 ft.	2 50
	14x14-in. box	7 to 8 ft.	5 00
	Præcox du Grand Jardin, balled	6 to 8 ft.	6 00
	Præcox du Mans, balled	6 to 8 ft.	6 00
<b>Mahonia</b> —Aquifolia,	5-inch pot	1 ft.	50
	Bealii, balled	3 to 4 ft.	1 00



		Each.
<b>Mahonia</b> —Fascicularis, balled .....	2 to 3 ft.	1 00
Japonica, balled .....	1½ to 2 ft.	75
<b>Melaleuca</b> —Oppositifolia, 6-inch pot.....	3 to 4 ft.	75
balled .....	3 to 4 ft.	75
Styphilioides, balled .....	6 ft.	75
6-inch pot .....	3 to 4 ft.	50
<b>Metrosideros</b> —Semperflorens, 3-inch pot.....	12 to 15 in.	40
<b>Metinea</b> —Chilensis, 5-inch pot .....	2 to 3 ft.	75
<b>Murraya</b> —Exotica, 4-inch pot.....	15 to 18 in.	75
<b>Myrtle</b> —Common, balled .....	3 to 4 ft.	50
5-inch pot .....	2 to 3 ft.	50
Double-flowering, 5-inch pot .....	2 to 3 ft.	50
Microphylla (small-leaved), 5-inch pot.....	2 to 3 ft.	50
balled .....	2 to 3 ft.	50
Thymifolia, 5-inch pot .....	2 to 3 ft.	50
balled .....	2 to 3 ft.	50
Variegated, 5-inch pot .....	1½ to 2 ft.	50
balled.....	1½ to 2 ft.	50
<b>Nandina</b> —Domestica, 7-inch pot .....	2 to 2½ ft.	75
balled .....	2 to 2½ ft.	50
balled .....	1½ to 2 ft.	40
<b>Oak</b> —Acuta, 5-inch pot .....	12 to 15 in.	50
Cuspidata, balled .....	3 to 4 ft.	1 00
California Live Oak, 5-inch pot, per 10, \$4.00.....	2 to 3 ft.	50
4-inch pot, per 10, \$3.50.....	2 to 3 ft.	40
Cork, balled.....	8 to 10 ft.	3 00
5-inch pot .....	3 to 4 ft.	75
5-inch pot, per 10, \$4.00 .....	2 to 3 ft.	50
Holly-leaved, balled.....	6 to 8 ft.	3 00
<b>Olea</b> —Fragrans, White, balled.....	2 to 2½ ft.	75
6-inch pot.....	2½ to 3 ft.	75
4-inch pot.....	1½ to 2 ft.	50
Fragrans, Yellow, balled.....	2 to 2½ ft.	75
5-inch pot .....	1½ to 2 ft.	50
<b>Oleander</b> —Assorted, balled .....	4 to 5 ft.	1 00
balled .....	3 to 4 ft.	75
balled .....	2 to 3 ft.	50
Claude Blanc, single, dark red; Dr. Golfin, single, bright lilac rose; Double Pink; Lillian Henderson, double white; Madam Chas. Baltat, rosy carmine, semi-double; Madam Dubois, single pure white; Madam Peyre, straw color, semi-double; Madonni Grandiflora, large white semi-double; Prof. Durand, yellow, semi-double; Single White.		
<b>Orange</b> —Boquet des Fleurs, balled.....	3 to 4 ft.	2 00
Golden Variegated, balled .....	4 to 5 ft.	2 00
<b>Pepper Tree</b> —5-inch pot, per 10, \$4.00 .....	3 to 4 ft.	50
4-inch pot, per 10, \$2.00 .....	2 to 3 ft.	25

		Each.	
<b>Photinia</b> —Serrulata, balled	.....4 to 6 ft.	75	
	balled ..... 3 to 4 ft.	50	
	5-inch pot.....4 to 5 ft.	50	
<b>Pine</b> —Austrian, 6-inch pot	.....2 to 3 ft.	1 00	
	Canariensis, balled.....6 to 8 ft.	2 50	
	balled.....4 to 6 ft.	1 50	
	5-inch pot.....2½ to 3 ft.	75	
	Contorta, balled .....2 to 3 ft.	1 00	
	3-inch pot .....1½ to 2 ft.	75	
	Coulterii, balled.....4 to 5 ft.	1 50	
	balled.....3 to 4 ft.	1 00	
	5-inch pot .....1½ to 2 ft.	75	
	Maritima, 5-inch pot.....2 to 2½ ft.	75	
Monterey, balled	.....7 to 8 ft.	1 00	
	balled, per 10, \$4.00; per 100, \$30 ..... 4 to 6 ft.	50	
	balled, per 10, \$3.00; per 100, \$25 .....3 to 4 ft.	40	
	balled, per 10, \$2.00; per 100, \$18.....18 to 24 in.	25	
	4-inch pot, per 10, \$2.00 .....15 to 18 in.	25	
Transplanted in boxes (of 100 each), 1 year, 6 to 8 inch; per box, \$3.00.			
Mascayana, balled	.....1½ to 2 ft.	50	
Pinea, 5-inch pot	.....2½ to 3 ft.	50	
Ponderosa, balled	.....1 to 1½ ft.	75	
Sabiniana, 5-inch pot	.....2½ to 3 ft.	75	
Scotch, balled, per 10, \$6.00	.....2 to 2½ ft.	75	
Weeping, 8-inch pot	.....2½ ft.	2 50	
<b>Pittisporum</b> —Eugenoides, 10x12-inch box	.....5 to 6 ft.	1 00	
	balled ..... 6 ft.	1 00	
	balled, per 10, \$6.00 .....4 to 5 ft.	75	
	balled, per 10, \$4.00 .....3 to 4 ft.	50	
	balled, per 10, \$2.00 ..... 2 ft.	25	
	6-inch pot, per 10, \$6.00.....5 to 6 ft.	75	
	5-inch pot, per 10, \$4.00 .....4 to 5 ft.	50	
	4-inch pot, per 10, \$3.50.....3 to 4 ft.	40	
	3-inch pot, per 10, \$2.00.....2 to 3 ft.	25	
	Nigracans, 10x12-inch box	.....6 to 7 ft.	1 00
	balled.....4 to 5 ft.	75	
	6-inch pot, per 10, \$6.00.....5 to 6 ft.	75	
	5-inch pot .....4 to 5 ft.	50	
	Tobira, balled.....1 to 1½ ft.	50	
Tobira Variegated, balled .....3 to 4 ft.	75		
<b>Privet</b> —California, per 10, \$1.00; per 100, \$6.00	.....2 to 4 ft.	15	
	Evergreen, per 10, \$1.00; per 100, \$6.00	.....2 to 4 ft.	15
<b>Raphiolepis</b> —Ovata, balled.....1½ to 2 ft.		50	



		Each.
<b>Redwood</b> —balled, per 10, \$6.00 .....	4 to 6 ft.	75
balled, per 10, \$4.00 .....	3 to 4 ft.	50
6-inch pot, per 10, \$4.00.....	2 to 2½ ft.	50
5-inch pot, per 10, \$3.50.....	2 to 2½ ft.	40
5-inch pot, per 10, \$3.00.....	1½ to 2 ft.	35
4-inch pot, per 10, \$2 00.....	1 to 1½ ft.	25
Glaucous-leaved, balled.....	6 to 8 ft.	1 50
balled.....	4 to 6 ft.	1 00
6-inch pot. ....	2½ to 3 ft.	75
<b>Retinospora</b> —Plumosa Aurea, balled.....	2 to 3 ft.	75
Argentea Var., balled .....	2 to 3 ft.	75
Viridis, balled.....	4 to 5 ft.	1 00
balled.....	2 to 2½ ft.	75
<b>Rhododendron</b> —Grafted Varieties, balled .....	2 to 2½ ft.	2 00
Ponticum, balled .....	3 to 4 ft.	1 50
balled.....	2½ to 3 ft.	1 00
<b>Rosemary</b> —6-inch pot.....	12 to 15 in.	50
<b>Sciadopity's Verticellata</b> (Umbrella Pine)—8-in. pot...4 to 5 ft.		4 00
7-in. pot...2½ to 3 ft.		2 50
<b>Spruce</b> —Alcoquiana, balled.. .....	2 to 2½ ft.	3 00
Alba, balled.....	2 to 2½ ft.	1 00
Balsam, balled .....	1½ to 2 ft.	1 00
Cephalonica, balled.....	4 to 6 ft.	4 00
balled.....	3 to 4 ft.	2 50
Concolor, balled.. .....	2 to 2½ ft.	2 00
balled.....	1½ to 2 ft.	1 50
balled.....	1 to 1½ ft.	1 00
Engelmanni, balled. ....	1½ to 2 ft.	1 00
Douglass, balled.....	3 to 4 ft.	1 50
balled .....	2 to 3 ft.	75
Morinda, 8-inch pot.....	3 to 4 ft.	1 50
Menzies, balled.....	1½ to 2 ft.	1 00
Mariesi, balled.....	12 to 15 in.	1 00
Nigra Dommeti, balled .....	4 to 6 ft.	3 00
Nobilis, balled.....	2½ to 3 ft.	3 00
Nordman's Silver, balled.....	15 to 20 in.	1 00
Norway (Excelsa), balled .....	2 to 2½ ft.	75
Excelsa Aurea, balled.....	2 to 2½ ft.	1 50
Pinsapo, balled.....	15 to 20 in.	1 50
Polita, balled.....	1½ to 2 ft.	1 50
Parryana Glauca, balled. ....	1½ to 2 ft.	3 00
Pungens (Colorado Blue Spruce), balled.....	4 to 5 ft.	5 00
balled.....	3 to 4 ft.	4 00
balled.....	2 to 3 ft.	2 50
Remonti, 8-inch pot.....	18 to 22 in.	2 00

	Each.
<b>Thuja</b> —Gigantea, boxed .....	9 to 10 ft. 4 00
balled .....	6 to 8 ft. 1 00
balled, per 10, \$6.00.....	4 to 6 ft. 75
balled, per 10, \$4.00.....	3 to 4 ft. 50
Lobbii Aurea, balled.....	3 to 4 ft. 1 00
10x12-inch box.....	4 to 5 ft. 1 50
5-inch pot .....	1½ to 2 ft. 1 00
<b>Thujopsis</b> —Borealis Glauca, balled.....	6 to 8 ft. 2 00
Variegated, balled.....	4 to 5 ft. 1 50
Dolobrata, 5-inch pot.....	12 to 15 in. 75
Variegated, 5-inch pot.....	12 to 15 in. 1 00
<b>Veronica</b> —Andersonii, 4-inch pot, per 10, \$3.50.....	1½ to 2 ft. 40
Decussata, balled, per 10, \$3.50.....	2 to 3 ft. 40
5-inch pot, per 10, \$4.00.....	2 to 2½ ft. 50
Imperialis, 6-inch pot, per 10, \$4.00.....	2½ to 3 ft. 50
4-inch pot, per 10, \$3.50 .....	1 to 1½ ft. 40
Variegated, 4-inch pot, per 10, \$3.50.....	1 to 1½ ft. 40
<b>Viburnum</b> —Awabuki, balled....	3 to 4 ft. 1 00
<b>Yew</b> —Irish, balled.....	8 to 9 ft. 3 00
Japan (Macrophylla), 6-inch pot ...	2 to 3 ft. 1 50

## *Evergreen Hedge Plants*

	Each.
<b>Box</b> —Dwarf, per 10, \$1.50 .....	15 to 18 in. 25
per 10, \$1.00; per 100, \$8.00 .....	8 to 12 in. 20
per 10, \$.75; per 100, \$6.00.....	6 to 8 in. 15
Japan Broad-leaved, balled, per 10, \$2.50.....	2 to 2½ ft. 35
Narrow-leaved, balled, per 10, \$2.50.....	2½ to 3 ft. 35
<b>Cypress</b> —Monterey, balled, per 10, \$2.50; per 100, \$20.4 .....	4 to 6 ft. 35
balled, per 10, \$1.50; per 100, \$12.2 .....	2 to 2½ ft. 20
3-inch pots, per 10, \$2.00.....	3 to 4 ft. 25
Transplanted in boxes (of 100 each), 2 year, per box, \$3.00; per 1,000, \$25.....	15 to 18 in.
Transplanted in boxes (of 100 each), 1 year, per box, \$2.50; per 1,000, \$20 .....	6 to 8 in.
<b>Laurestinus</b> —Common, balled.....	2 to 3 ft. 50
balled.....	1 to 1½ ft. 40
<b>Ligustrum</b> —Japonicum (Japan Privet), balled, per 10, \$4.00.....	4 to 6 ft. 50
balled, per 10, \$2.00.....	2 to 3 ft. 25
<b>Privet</b> —California, per 100, \$6.00 .....	2 to 4 ft. 15
Evergreen, per 100, \$6.00.....	2 to 4 ft. 15



## Deciduous Flowering Shrubs

		Each.
<b>Almond</b> —Dwarf, Double White and Double Red.....	3 to 5 ft.	50
<b>Althea</b> (Rose of Sharon).....	3 to 4 ft.	50
.....	2 to 3 ft.	40
Camellæflora, white, pink center; Double Pink, Double Red, Double White, Totus Alba, Single White, Variegated, Violet, Semi-double.		
<b>Berberry</b> —Common.....	3 to 4 ft.	35
.....	2 to 3 ft.	25
Purple-leaved.....	4 to 5 ft.	50
<b>Broom</b> (Genista)—Andreana, yellow and crimson.....	4 to 6 ft.	50
6-inch pot.....	3 to 4 ft.	40
5-inch pot.....	2 to 3 ft.	35
Candicans, yellow, 3-inch pot, per 10, \$2.50.....	3 to 4 ft.	35
Spanish, yellow, 6-inch pot.....	4 to 5 ft.	40
3-inch pot, per 10, \$2.00.....	3 to 4 ft.	25
Scotch, yellow, 6-inch pot.....	3 to 4 ft.	40
5-inch pot.....	2 to 3 ft.	35
Portugal, white, 3-inch pot, per 10, \$2.00.....	2 to 3 ft.	25
<b>Calycanthus</b> —Floridus (Sweet Shrub), double purple ...	1½ to 2 ft.	40
Præcox, yellow.....	2 to 3 ft.	40
<b>Caragana</b> —Siberian Pea Tree, yellow.....	6 to 8 ft.	50
<b>Cercidiphyllum</b> —Japonica.....	3 to 4 ft.	75
<b>Chamæcerasus</b> —Alberti, pink.....	2 to 3 ft.	35
<b>Corchorus</b> —Japonica, single white.....	2 to 2½ ft.	40
Japonica Variegated, single yellow.....	1 to 1½ ft.	50
<b>Cherry</b> —Flowering.....	6 to 8 ft.	75
.....	4 to 6 ft.	50
.....	3 to 4 ft.	40
Double Red-flowering; Single Red-flowering; Large Double-flowering, white; Ranunculus-flowering, double white.		
<b>Cherry</b> —Weeping.....	6 to 8 ft.	1 00
.....	3 to 4 ft.	50
<b>Cornus</b> —Rubra, red.....	4 to 5 ft.	75
<b>Coronilla</b> —Emerus and Glauca, yellow, 5-inch pot. ....	3 to 4 ft.	40
<b>Grape Myrtle</b> —Crimson.....	1½ to 2 ft.	75
Pink.....	8 ft.	75
.....	2 to 2½ ft.	40
Purple.....	2 to 3 ft.	40
Light Pink.....	2 to 3 ft.	40
Regia.....	2 ft.	75
Scarlet.....	2 to 3 ft.	75

		Each.
<b>Currant</b> —Sanguineum, Crimson-flowering .....	4 to 6 ft.	75
	5-inch pot ....	3 to 4 ft. 50
	Yellow-flowering .....	3 to 4 ft. 40
<b>Cytisus</b> —Purpureum .....	1 to 1½ ft.	50
<b>Deutzia</b> —Crenata and Fortunei, white .....	3 to 4 ft.	35
	Gracilis, white .....	2 to 3 ft. 35
<b>Dogwood</b> —Sanguinea, Blood-colored .....	4 to 6 ft.	50
	.....	3 to 4 ft. 40
	Siberica, Red-twigged. ....	1 to 1½ ft. 50
<b>Elder</b> —Golden-leaved. ....	3 to 4 ft.	50
<b>Erythrina</b> —Coral Plant, crimson .....	2 to 3 ft.	40
<b>Euonymus</b> —European .....	3 to 4 ft.	40
	American .....	2 to 3 ft. 50
<b>Exochordia</b> —Grandiflora, white .....	4 to 6 ft.	50
<b>Fuchsia</b> —Ricartoni, small red flowers. ....	3 to 4 ft.	50
<b>Hibiscus</b> —Mutabilis, white and pink .....	4 to 5 ft.	75
<b>Honeysuckle</b> —Upright, Tartarian Rosea, Tartarian		40
	White .....	3 to 4 ft.
<b>Hydrangea</b> —Hortensis, rose color, 7-inch pot .....	1½ to 2 ft.	50
	6-inch pot .....	15 to 18 in. 40
	Paniculata Grandiflora, white ..	2 to 3 ft. 50
	Ramulis Coccinea, deep rose, 6-inch pot...	15 to 18 in. 40
	Thomas Hogg, white .....	2 to 2½ ft. 40
	Variegated, pink, 7-inch pot.....	1½ to 2 ft. 50
<b>Hypericum</b> —Hircinum (St. John's Wort).....	4 to 5 ft.	50
<b>Lemon Verbena</b> .....	4 to 6 ft.	50
	.....	3 to 4 ft. 40
	6-inch pot.....	3 to 4 ft. 40
<b>Leycesteria</b> —Elegans, reddish-purple. ....	4 to 5 ft.	40
<b>Lilac</b> —Assorted .....	6 to 8 ft.	1 00
	.....	4 to 6 ft. 75
	.....	3 to 4 ft. 50
	Purple; White; Rothomagensis, red; Rubra de Marley, purple; Sanguinea, red.	
<b>Lilac</b> —Grafted Varieties .....	4 to 6 ft.	1 00
	.....	3 to 4 ft. 75
	.....	2 to 3 ft. 50
	Alba Grandiflora, white; Amæna, purple; Chas. X., reddish purple; Comte de Paris, reddish purple; Chas. Joly, red; Dar- mouth, purple; Fleurs d'Oranger, white; Gloire de Lorraine, red and lilac; Gloire de Moulins, rosy lilac; Gigantea, blue; Le- moinei, fl. pl., reddish purple; Michael Buchner, double, pale lilac; Ludwig Spath, purplish red; Pres. Grevy, double, blue; Pres. Massard, red and purple; Triomphe d'Orleans, purple; Virginal, white.	



			Each.
<b>Magnolia</b> —Gracilis, reddish purple.....	4	to 6 ft.	75
.....	3	to 4 ft.	50
Kobus, bluish white.....	6	to 8 ft.	1 00
.....	3	to 4 ft.	75
Purpurea, dark purple.....	4	to 6 ft.	75
.....	3	to 4 ft.	50
Rubra, deep red.....	2	to 3 ft.	75
Soulangeana, white with purple.....	4	to 6 ft.	1 50
.....	3	to 4 ft.	1 00
<b>Mock Orange</b> —Coronarius, fragrant white.....	3	to 4 ft.	40
.....	2	to 3 ft.	30
Flore Plena Alba, fragrant white.....	3	to 4 ft.	40
Grandiflora, white.....	4	to 5 ft.	40
.....	2	to 3 ft.	30
Golden-leaved ..	2	to 3 ft.	50
<b>Maple</b> —Japan.....	2	to 3 ft.	75
Japonicum, Japonicum Variegatum, Atropurpureum, Atropurpureum Variegatum, Aureum, Polyporum, Atrosanguineum, Atropurpureum-dissectum, Polymorphum.			
<b>Pyrus</b> —Arbutifolia, white.....	2	to 3 ft.	75
<b>Paliurus</b> —Aculeatus (Christ's Thorn), yellow, 5-in. pot.	4	to 5 ft.	50
<b>Plum</b> —Triloba, double-flowering, pink.....	3	to 4 ft.	40
Tomentosa (Japan), pink.....	4	to 6 ft.	50
<b>Poinciana</b> —Gilliesii, yellow.....	6	ft.	50
<b>Pomegranate</b> .....	3	to 4 ft.	40
Double Red, Double White, Madam Legrelle, Double Aurora.			
<b>Purple Fringe</b> —(Smoke Tree).....	2	to 3 ft.	50
<b>Photinia</b> —Villosa, flowers white, berries red.....	4	to 5 ft.	75
<b>Quince</b> —Japan Scarlet.....	4	to 6 ft.	50
.....	3	to 4 ft.	35
.....	2	to 3 ft.	25
Japan White.....	4	to 6 ft.	50
<b>Rhodotypus</b> —Kerrioides, white.....	3	to 4 ft.	40
<b>Rhus</b> —Vernicifera.....	4	to 6 ft.	50
.....	3	to 4 ft.	40
Glabra Laciniata, fern-leaved.....	2	to 3 ft.	50
Cotinus Atropurpureum.....	4	to 5 ft.	50
<b>Rose Acacia</b> —Rose-colored flowers.....	4	to 6 ft.	40
.....	6	to 8 ft.	50
<b>Snowball</b> .....	4	to 6 ft.	50
.....	3	to 4 ft.	35
<b>Snowberry</b> —Variegated.....	2	to 3 ft.	50
<b>Spirea</b> —Antony Waterer, pink.....	2	to 2½ ft.	50
Prunifolia fl. pl., double white.....	4	to 5 ft.	40
Reevesii fl. pl., white.....	3	to 4 ft.	40
<b>Staphylea</b> —Colchica, white.....	4	to 6 ft.	75
Permata, white..	4	to 5 ft.	75
.....	3	to 4 ft.	50

	Each.
<b>Styrax</b> —Japonica, white.....	1½ to 2 ft. 75
<b>Tree Pæonies</b> —Assorted colors, purple, red, pink and white, from open ground, \$1.00 to \$2.00 each.	
<b>Viburnum</b> —Plicatum (Japan Snowball), white.....	2 to 3 ft. 75
Dentatum, greenish white.....	2 to 3 ft. 50
Nepalense, white.....	2 to 3 ft. 75
Oxycoccos, white.....	2 ft. 50
<b>Vitex</b> —Agnus Castus (Chaste Tree), 5-inch pot..	3 to 4 ft. 50
<b>Weigelia</b> —Assorted.....	3 to 4 ft. 40
.....	2 to 3 ft. 30
Abel Carriere; Carmine; Dr. Baillon, red; Hendersonii, rose; Lavellai, dark red; Rosea; Van Houtte, carmine; Variegated, white.	
<b>White Fringe</b> —(Chionanthus).....	4 to 5 ft. 50
.....	3 to 4 ft. 40

## Climbing and Trailing Plants

	Each.
<b>Akebia</b> —Quinata, purple, 5-inch pot.....	50
3-inch pot.....	40
<b>Ampelopsis</b> —Veitchii (Boston Ivy), 5-inch pot.....	50
Quinquifolia (Virginia Creeper).....	40
Engelmannii, 6-inch pot.....	50
<b>Bigonia</b> —Grandiflora (Trumpet Creeper), orange scarlet.....	40
Thunbergii, yellow.....	50
<b>Bougainvillea</b> —Glabra Sanderiana, red, 6-inch pot.....	50
<b>Clematis</b> —Duchess of Edinburgh, double white.....	1 00
Gem, deep lavender blue.....	75
Henryii, white.....	75
Gipsy Queen, velvety purple.....	75
Jackmanii, intense violet.....	75
Jackmanii Alba, white.....	75
Madam Granger, violet, with purple bars.....	75
Madam Edouard Andre, or Red Jackmanii.....	1 00
Madam Van Houtte, pure white.....	1 00
Mrs. S. C. Baker, white.....	75
Montana, white, with dash of pink.....	50
Kermesina, red.....	50
Standishi, light mauve.....	75
William Kennet, deep lavender.....	1 00



	Each.
<b>Clanthus</b> —Punicus, crimson, 4-inch pot.....	40
<b>Cobea</b> —Scandens, purple, 4-inch pot.....	40
<b>Dolichos</b> —Lignosus (Australian Pea Vine), 4-inch pot.....	40
<b>Decumaria</b> —Barbarum, white, 4-inch pot.....	75
<b>Honeysuckle</b> .....	25
Aurea-reticulata, Belgian, Chinese Evergreen, Halleana, Sem- perflorens, Punicea.	
<b>Ivy</b> —Giant, and Irish, 4-inch pot.....	40
Variegated, 5-inch pot.....	50
<b>Ipomea</b> —Mexicana, red.....	50
<b>Jasmine</b> —Catalonian, fragrant, double, white, 4-inch pot.....	50
Capensis, fragrant, white, 4-inch pot.....	50
Ligustrifolium, white, 5-inch pot.....	40
Officinale, white.....	40
Revolutum, yellow, 5-inch pot.....	40
balled..... 4 ft.	40
<b>Lycium</b> —Barbarum, purple and yellow..... 3 to 4 ft.	50
Vulgare, violet..... 3 to 4 ft.	50
<b>Kennedya</b> —Violacea Rosea, 3-inch pot.....	50
<b>Manettia</b> —Bicolor, scarlet, 4-inch pot.....	50
<b>Mandevillea</b> —Sauveolens (Chili Jasmine), white, 4-inch pot.....	40
<b>Passion Vine</b> —5-inch pot..... 4 to 5 ft.	40
Colvillei, blue; Constance Elliott, white; Floribunda, white and purple; Pfordii, light purple; Tacsonia (Von Volxemi), scarlet; Tacsonia Buchanani, pink; Violacea.	
<b>Phaseolus</b> (Snail Vine)—3-inch pot.....	50
<b>Physianthus</b> —Albens, white, 6-inch pot.....	40
<b>Silk Vine</b> (Periploca)—Purple.....	40
<b>Smilax</b> —3-inch pot.....	25
<b>Sollya</b> —Heterophylla, blue, 5-inch pot.....	40
<b>Solanum</b> —Jasminoides, bluish white, 5-inch pot.....	35
<b>Swainsonia</b> —Galegifolia Alba, 5-inch pot.....	40
3-inch pot.....	30
Grayana, 3-inch pot.....	50
<b>Tecoma</b> —Jasminoides, white and red, 5-inch pot.....	40
3-inch pot.....	30
<b>Vitis</b> —Heterophylla.....	50
<b>Wistaria</b> —Chinese, white and purple.....	40
Chinese Double purple.....	50
Multijuga.....	50
Multijuga Alba.....	50

# *Palms, Dracaenas, Agaves, Yuccas, Etc.*

---

## *Palms*

Palms have now become almost indispensable in all decorations, whether for apartments, or conservatories, or the production of tropical effects in landscapes. When planted out, no class of plants makes such a grand display, and none are of more easy culture. Rich soil, mulching, and watering will in a short time produce grand specimens.

While our main stock of these highly desirable garden ornaments is grown in the open ground, thereby obtaining the finest plants, we also cultivate more or less of each variety in pots or boxes. These are well-established, well-furnished specimens, suitable for hall or house decorations, or, where immediate effect is desired out-of-doors, they can be used to great advantage, being almost absolutely safe from any set-back. We distinguish the hardy sorts with an \*.

*A list of large specimen plants, of palms, etc., not enumerated in this catalogue, will be mailed upon application.*

	Each.
<b>Areca</b> —Lutescens, 6-inch pots.....	24 to 30 in. 2 00
* <b>Chamærops</b> —Argentea, balled.....	3 to 4 ft. 3 00
balled.....	2 to 3 ft. 2 00
* <b>Excelsa</b> (Japan Fan Palm), boxed .....	8 to 10 ft. 10 00
boxed.....	7 to 8 ft. 8 00
balled.....	6 to 7 ft. 6 00
balled.....	5 to 6 ft. 3 00
balled.....	4 to 5 ft. 1 50
14x14-in. box, 24 to 30-in. trunk.....	6 to 7 ft. 5 00
12x12-in. box, stocky.....	5 to 6 ft. 3 00
10x10-in. box, stocky.....	4 to 5 ft. 2 00
10x10-in. box, stocky.....	3 to 4 ft. 1 50
10-inch pot.....	2½ to 3 ft. 2 00
9-inch pot.....	2½ to 3 ft. 1 50





		Each.
* <b>Phoenix</b> —Canariensis, balled.....	2 to 3 ft.	1 00
balled.....	1½ to 2 ft.	75
20x20-inch box.....	6 to 7 ft.	12 00
16x18-inch box.....	5 to 6 ft.	5 00
14x16-inch box.....	4 to 5 ft.	3 00
12x12-inch box.....	3 to 4 ft.	2 00
8-inch pot.....	2 to 2½ ft.	1 50
7-inch pot.....	2 to 2½ ft.	1 00
* <b>Dactylifera</b> (Date Palm), boxed.....	7 to 8 ft.	5 00
balled.....	5 to 6 ft.	3 00
balled.....	4 to 5 ft.	2 00
balled.....	3 to 4 ft.	1 50
Reclinata, balled.....	4 to 5 ft.	3 00
14x16-inch box.....	4 to 5 ft.	4 00
14x14-inch box.....	3 to 4 ft.	2 50
7-inch pot.....	2 to 2½ ft.	1 00
* <b>Pritchardia</b> —Filifera (California Fan Palm),		
balled.....	6 to 7 ft.	6 00
balled.....	5 to 6 ft.	5 00
balled.....	4 to 5 ft.	3 00
balled.....	2 to 3 ft.	1 00
14x14-inch box.....	4 to 5 ft.	5 00
12x12-inch box.....	4 to 5 ft.	4 00
* <b>Pandanus</b> —Veitchii, 7-inch pot.....	18 to 22 in.	2 50
* <b>Sabal</b> —* Palmetto, balled.....	4 to 5 ft.	2 50
* Ghiesbrihtii, balled.....	2 to 3 ft.	2 50
* Blackburniana, balled.....	3 to 4 ft.	3 00
* <b>Washingtonia</b> —Sonoræ (Washington Palm),		
boxed.....	8 to 9 ft.	8 00
boxed.....	7 to 8 ft.	6 00
boxed.....	6 to 7 ft.	5 00
balled.....	5 to 6 ft.	3 00
balled.....	4 to 5 ft.	2 00
balled.....	3 to 4 ft.	1 50
balled.....	2 to 3 ft.	1 00
18x18-inch box.....	7 to 8 ft.	7 00
16x18-inch box.....	5 to 6 ft.	5 00
14x14-inch box.....	4 to 5 ft.	4 00
14x14-inch box.....	3 to 4 ft.	3 00
12x12-inch box.....	4 to 5 ft.	2 00
10x10-inch box.....	3 to 4 ft.	1 00
10-inch pot.....	2 to 2½ ft.	1 50
8-inch pot.....	1½ to 2 ft.	1 00



## *Dracaenas*

	Each.
<b>Dracaena</b> —Australis, boxed .....	10 to 12 ft. 10 00
boxed .....	8 to 10 ft. 8 00
balled .....	4 to 5 ft. 2 00
balled .....	3 to 4 ft. 1 50
balled .....	2 to 3 ft. 1 00
5-inch pot .....	1½ to 2 ft. 75
Fosterii, boxed.....	8 to 10 ft. 8 00
Indivisa, balled .....	4 to 5 ft. 2 00
balled .....	3 to 4 ft. 1 50
balled .....	2 to 3 ft. 1 00
5-inch pot.....	1½ to 2 ft. 50
Draco, 6-inch pot.....	1 to 1½ ft. 2 00
Godsiffiana, 4-inch pot.....	8 to 12 in. 1 00
Sanderiana, 4-inch pot.....	12 to 15 in. 1 00

## *Agaves*

	Each.
<b>Agave</b> —American (Century Plant), balled .....	2 to 3 ft. 1 50
balled .....	1½ to 2 ft. 1 00
Variegated, balled .....	2 to 3 ft. 1 50
balled .....	1½ to 2 ft. 1 00
Lecheguella, balled .....	1½ to 2 ft. 1 00

## *Yuccas*

	Each.
<b>Yucca</b> —Alcefolia Rubra, balled .....	2 to 2½ ft. 1 50
balled .....	1½ to 2 ft. 1 00
Filamentosa, balled .....	1½ ft. 50
Pendula, balled.....	3 to 4 ft. 2 00
balled .....	2 to 2½ ft. 1 50
balled.....	1½ to 2 ft. 1 00
8-inch pot .....	1½ to 2 ft. 75

	Each.
<b>Yucca</b> —Plicata, balled .....	1 00
Quadricolor, 7-inch pot.....	2 00
Variegated, balled .....	2 00
balled .....	1 50
9-inch pot.....	1 50
6-inch pot.....	1 00
5-inch pot .....	75
<b>Nolina</b> —Beldingii, balled .....	3 00
balled .....	1 50

## *Dasyllirion*

	Each.
<b>Dasyllirion</b> —Glauca, balled.....	2 50
Gracilis, balled.....	75





## BUSH ROSES

The plants offered are strong and vigorous, have been grown entirely in the open ground, and consequently will not require the careful nursing necessary to those propagated under glass in three months' time, and sold at low rates. They can not fail to give entire satisfaction the first summer after planting. From November to March they can be shipped in a dormant state, packed in moss. For culture best adapted to each class, we refer to our Descriptive Catalogue No. 2. The varieties which we can furnish in Tree or Standard Roses, will be found listed separately.

## NEW ROSES

Price, each, 50 cents.

The following are offered with the raiser's description, and are the productions of celebrated growers.

**Admiral Dewey** (Hybrid Tea)—Color a beautiful light blush pink, clear and distinct; free bloomer and very fragrant.

**Gardenia** (Evergreen)—Strong grower with large green foliage. Flowers produced singly on stems one-half to one foot long; when in bud hardly distinguishable from Perle, bright yellow, and when open cream color, three to three and one-half inches in diameter, incurving towards evening to perfect imitation of Gardenia, or Cape Jasmine, as to shape or color, hence its name. Flowers are delightfully fragrant, and produced freely.

**Liberty** (Hybrid Tea)—Undoubtedly the finest crimson rose of modern times. Color pure crimson scarlet; a steady and constant bloomer; flowers of large size, beautiful elongated form. A remarkable keeper when cut, preserving its brilliancy of color without change; very fragrant.

## *General Collection*

Price, each, 25 cents; per 10, \$2.00.

### *TEA OR EVER BLOOMING*

Belle Lyonnaise, lemon yellow. Bon Silene, deep rose. Bougere, violet crimson, shaded lilac. Bridesmaid, clear bright pink. Catherine Mermet, clear shining pink. Charles Rivolli, brilliant carmine. Christine de Noue, deep red rose. Climbing Devoniensis, creamy white. Climbing Niphotos, pure white. Climbing Perle des Jardin, deepest yellow. Climbing Souv. de Wooton, bright magenta red. Climbing White Pet, pure white. Comtesse Riza du Parc, coppery rose. Cornelia Cook, creamy white. Dr. Grill, coppery yellow, tinged rose. Duchesse de Brabant, soft silvery blush. Elie Beauvillain, rosy white, center coppery red. Eliza Sauvage, yellowish white. Etoile de Lyon, chrome yellow. Francisca Kruger, chamois color, brightened with yellow and rose. Gloire de Dijon, fawn, tinted salmon. Golden Gate, rich creamy white. Gold of Ophir, salmon and fawn. Grace Darling, rose, shaded crimson. Improved Rainbow, bright pink, penciled bright carmine. La France, silvery rose. Mad. Devacout, clear canary yellow. Mad. de Vatry, rich crimson scarlet. Mad. de Watteville, yellow, tinged carmine, and edged crimson. Mad. Falcot, nankeen yellow. Mad. Hoste, canary yellow. Mad. Joseph Schwartz, pure white. Mad. Lambard, rosy bronze, shaded carmine. Mad. M. Kuppenheim, canary yellow, tinged pink. Mad. Scipion Cochet, creamy rose, crimson center. Mad. Welch, pale yellow. Marie Van Houtte, white, tinged yellow, bordered rose. Maurice Rouvier, rose, shaded red. Niphotos, pure white. Papa Gontier, brilliant carmine. Perle des Jardin, deepest yellow. Princess Stephanie, salmon yellow, tinted crimson. Rainbow, pink, splashed carmine. Reine Marie Henriette, clear cherry red. Safrano, buff, shaded yellow. Shirley Hibbard, nankeen yellow. Souv. de Victor Hugo, bright rose. Souv. de Wooton, red. Souv. d'Un Ami, rose, shaded salmon. Sunset, rich golden amber. The Bride, white, shaded rose. Triomphe du Luxembourg, buff rose. White Bon Silene, creamy white.



## *HYBRID TEA*

Augustine Guinosseau (White La France), light peach. Belle Siebrecht, solid pink of the richest shade. Cheshunt Hybrid, red shaded violet. Climbing La France, silvery rose. Duchess of Albany (Red La France), dark pink. Kaiserin A. Victoria, pure ivory white. Mad. A. Veysset (Striped La France), striped and shaded white. Mad. Caroline Testout, clear pink. Meteor, velvety crimson. Puritan, pure white. Souv. de Pres. Carnot, pink and white. Triomphe de Pernet Pere, bright red.

## *HYBRID PERPETUAL*

American Beauty, deep rose. Anna de Diesbach, carmine. Antoine Mouton, deep rose, tinged with lilac. Baron de Bonstettin, dark red, almost black. Baroness Rothschild, light pink. Black Prince, dark crimson. Captain Christy, flesh color, rosy center. Cardinal Patrizzi, velvety crimson. Charles Dickens, rose color. Chas. Lefebre, reddish crimson. Earl Dufferin, rich velvety crimson. Empereur du Maroc, deep velvety maroon. Fisher Holmes, bright scarlet. General Jacqueminot, brilliant crimson. Giant des Battles, deep fiery crimson. Gloire de Margottin, dazzling red. Gloire Lyonnaise, creamy white, tinged orange. Glory of Cheshunt, rich crimson. Glory of Waltham, brilliant crimson, red center. John Hopper, deep rose, crimson center. Mabel Morrison, white, flushed with pink. Mad. Gabriel Luizet, clear coral pink. Magna Charta, rosy red. Marchioness of Lorne, rose, carmine center. Margaret Dickson, white. Marie Baumann, crimson vermilion. Merville de Lyon, pure white, shaded rose. Mrs. John Laing, bright clear pink. Paul Neyron, dark rose. Pride of Reigate, carmine red, striped white. Prince Camille de Rohan, deep velvety crimson. Rosy Morn, salmon rose. Silver Queen, silvery blush. Ulrich Bruner, cherry red. Vick's Caprice, pink, striped carmine. Victor Verdier, rosy carmine, edged purple. Xavier Olibo, scarlet, shaded black.

## *MOSS*

Captain John Ingram, dark velvety purple. Elizabeth Rowe, bright pink. Etna, bright crimson, shaded purple. Glory of Mosses, pale rose. James Veitch, violet, shaded crimson. Mousseline, white, shaded rose. Prolific, or Perpetual White, white. Salet, light rose. Laneii, rich crimson, shaded rosy purple.

## *NOISETTE, OR CHAMPNEY*

Celine Forestier, pale yellow. Claire Carnot, pale yellow. Climbing Aimee Vibert, pure white. Cloth of Gold, deep yellow. Lamarque, white. L'Idéal, coppery rose. Marechal Niel, deep golden yellow. Reeve d'Or, deep yellow. Solfaterre, sulphur yellow. Wm. A. Richardson, orange yellow.

*HYBRID NOISETTE*

Perle des Blanches, pure white. Perfection des Blanches, pure white.

*BOURBON*

Hermosa, bright rose. Mrs. Bosanquet, pale flesh color. Red Bourbon. Santa Rosa, shell pink, inclining to crimson.

*POLYANTHA*

Clotilde Soupert, pink, shading to white. Crimson Rambler, bright crimson. Etoile d'Or, chrome yellow, citron red center. Golden Rambler, pale yellow. Mlle. Cecile Bruner, rosy pink. Mignonette, clear pink, changing white. Perle d'Or, coppery gold, changing to fawn and salmon. Pink Soupert, pale pink, changing to red. Yellow Rambler (Aglai), dark yellow. White Rambler.

*PROVENCE*

Belle des Jardin, purplish red, with white. Common Provence, or Cabbage Rose, rose color. Tricolor de Flandre, white, striped with red, purple, and violet.

*BANKSIA*

Double White. Double Yellow. Fortune's Yellow (Beauty of Glazenwood), double.

*AUSTRIAN*

Austrian Copper, coppery and reddish yellow. Persian Yellow, bright yellow.

*JAPAN*

Belle Poitevine (Rugosa), pink. Rugosa Alba Plena, double white. Rugosa Rubra, deep rose, tinged violet. Wichuraiana, pure white.

*HYBRID SWEETBRIERS*

Amy Robsart, deep rose. Anne of Geierstein, dark crimson. Flora McIvor, white, tinted rose.

*MISCELLANEOUS*

Baltimore Belle (Prairie), pale blush. Cherokee, double white. Cherokee, single white. Dundee Rambler (Ayrshire), white, tinged rose. James Sprunt (Bengal, or China), crimson. Musk Fringed, white. River's Musk, pink, shaded buff. Sweet Brier, or Eglantine.



## CLIMBING ROSES

These will be found described in the various preceding classes to which they belong. We collect them under this heading for the convenience of our patrons. They are very useful, and highly valued for training over arbors, trellises, and verandas, and as screens for unsightly objects, such as fences, walls, etc., they can not be surpassed.

Baltimore Belle, Prairie. Climbing Aimee Vibert, Noisette. Climbing Devoniensis, Tea. Climbing La France, Hyb. Tea. Climbing Niphetos, Tea. Climbing Perle des Jardin, Tea. Climbing Souv. de Wooton, Tea. Climbing White Pet, Tea. Celine Forestier, Noisette. Cherokee Single, Cherokee. Claire Carnot, Noisette. Cloth of Gold, Noisette. Crimson Rambler, Polyantha. Dundee Rambler, Ayrshire. Elie Beauvillian, Tea. Gloire de Dijon, Tea. Golden Rambler. Gloire de Margottin, Hy. Per. Glory of Waltham, Hy. Per. Gold of Ophir, Tea. Lamarque, Noisette. L'Ideal, Noisette. Marechal Niel, Noisette. Reine Marie Henriette, Tea. Reve d'Or, Noisette. White Banksia. William Allen Richardson, Noisette. Yellow Banksia. Yellow Rambler (*Aglaiia*). White Rambler (*Thalia*).

## Standard, or Tree Roses

Price, \$1.00 each.

### TEA OR EVERBLOOMING

Annie Cook, delicate pink. Annie Oliver, creamy blush. Amazone, yellow. Bon Silene, deep rose. Bridesmaid, clear bright pink. Catherine Mermet, clear shining pink. Comtesse de Caserta, dark purplish red. Comtesse de Frigneuse, canary yellow. Coquette de Lyon, canary yellow. Comtesse Riza du Parc, coppery rose. Cornelia Cook, creamy white. Devoniensis, creamy white, rosy center. Dr. Grill, coppery yellow, tinged rose. Duchesse de Brabant, soft silvery blush. Duchess of Edinburgh, deep rosy crimson. Eliza Sauvage, yellowish white. Etoile de Lyon, chrome yellow. Gloire de Dijon, fawn, tinted salmon. Gold of Ophir, salmon and fawn. Grace Darling, rose, shaded crimson. Improved Rainbow, bright pink, penciled bright carmine. Isabella Sprunt, sulphur yellow. La France, silvery rose. Mad. Chedanne Guinosseau, clear golden yellow. Mad. de Watteville, yellow, tinged carmine and edged crimson. Mad. Falcot, nankeen yellow. Mad. Hoste, canary yellow. Mad. Lambard, rosy bronze, shaded carmine. Mad. M. Kuppenheim, canary yellow, tinged pink. Mad. Welch, pale yellow. Marie Lambert, pale flesh. Marie Van Houtte, white, tinged yellow, bordered rose. Niphetos, pure white. Papa Gontier, brilliant carmine. Perle des Jardin, deepest yellow. Princess Stephanie, salmon yellow. Rainbow, pink, splashed carmine. Reine Marie Henriette, clear cherry red. Reine Marie Pia, scarlet rose, crimson center. Safrano, buff, shaded yellow. Sappho, apricot yellow. Sou. de Wooton, red. Sou. d'Un Ami, rose, shaded salmon. Sunset, rich golden amber. The Bride, white, shaded rose. The Queen, pure white.

## *Standard, or Tree Roses—Continued*

Triomphe du Luxembourg, buff rose. Viscountess Folkestone, creamy pink, center salmon.

### *HYBRID TEA*

Beauty of Stapleford, red, tinted violet. Cheshunt Hybrid, red, shaded violet. Duchess of Albany (Red La France), dark pink. Kaiserin A. Victoria, pure ivory white. Mad. Caroline Testout, clear pink. Puritan, pure white. Sou. de Pres. Carnot, pink and white.

### *HYBRID PERPETUAL*

Anna de Diesbach, carmine. Baron N. de Rothschild, bright rose crimson. Baroness Rothschild, light pink. Black Prince, dark crimson. Charles Lefebre, reddish crimson. Duke of Edinburgh, bright crimson. Empereur du Maroc, deep velvety maroon. Fisher Holmes, bright scarlet. General Jacqueminot, brilliant crimson. Giant des Battles, deep fiery crimson. Gloire de Margottin, dazzling red. Her Majesty, bright pink, shaded rosy salmon, John Hopper, deep rose. Lady Mary Fitzwilliam, delicate flesh color. Mabel Morrison, white, flushed with pink. Mad. Gabriel Luizet, clear coral pink. Marchioness of Lorne, rose, carmine center. Merveille de Lyon, pure white, shaded rose. Mrs. John Laing, bright clear pink. Queen of Queens, rose, edged with blush. Ulrich Bruner, cherry red. Victor Verdier, rose carmine, edged purple.

### *NOISETTE OR CHAMPNEY*

Aimee Vibert, pure white. Celine Forestier, pale yellow. Claire Carnot, pale yellow. Cloth of Gold, deep yellow. Lamarque, white. Marechal Niel, deep golden yellow. Reeve d'Or, deep yellow. Wm. A. Richardson, orange yellow.

### *BOURBON*

Red Malmaison, bright crimson. Sou. de la Malmaison, flesh color.

### *BENGAL, OR CHINA*

Agrippina, rich crimson. James Sprunt, crimson.

### *AUSTRIAN*

Austrian Copper, coppery and reddish yellow. Harrisonii, golden yellow.



## *Decorative, Bedding and Border Plants*

	Each
<b>Abutilon</b> (Chinese Bell-flower, Flowering Maple)—5-inch pot.....	25
Duc de Malakoff, crimson; Eclipse, red and bright yellow; Golden Fleece, bright yellow; Megapotamicum, bright red and yellow; Sensation, reddish yellow; Souv. de Bonn, bright orange red; Savitzii, orange veined.	
<b>Achania</b> —Malviviscus (Turk's Cap), scarlet, 4-inch pot .....	25
<b>Achillea</b> (Yarrow or Milfoil)—The Pearl, large pure white flowers..	25
<b>Acalypha</b> —Sanderii (Dewey Plant), 5-inch pot .....	50
<b>Anemone</b> (Wind-flower)—Japonica, fl. pl., white.....	40
<b>Armeria</b> (Sea Pink)—In boxes (of 50 each), per box, \$2.00; per 10, \$.75.	
<b>Arundo</b> —Donax, 6-inch pot.....	40
balled .....	40
Donax Variegated, 6-inch pot .....	50
balled.....	50
<b>Asparagus</b> —Plumosus, 5-inch pot .....	50
Plumosus Nanus, 5-inch pot.....	50
Sprengerii, 8-inch pot.....	75
5-inch pot.....	40
3-inch pot.....	25
12-inch hanging basket .....	1 50
<b>Aspidistra</b> —Lurida, 6-inch pot.....	50
Lurida Variegated, 5 inch pot .....	75
<b>Banana</b> —Abyssinian (Musa Ensete), 6-inch pot..... 3 to 4 ft.	75
<b>Bocconia</b> —Cordata Jedonsis, a valuable new perennial .....	40
<b>Begonia</b> —Flowering, assorted kinds, 5-inch pot .....	40
Rex, 4-inch pot .....	40
Gloire de Lorraine, new, flowers brilliant clear pink .....	50
<b>Brugmansia</b> —Knightii, double white, 6-inch pot.....	50
<b>Canna</b> —New.....	50
Cinnabar, clear cinnabar red, with distinct gilt edge; Pres. Meyers, color fiery deep crimson scarlet, very large; Mrs. Kate Gray, bright orange scarlet, flamed with golden yellow; Sam Trelease, pure rich glowing scarlet, edged with a yellow band.	
<b>Canna</b> —Selected Varieties, per 10, \$1.50.....	20
Admiral Avellan, rich orange scarlet; Allemania, golden yellow; Alphonse Bouvier, brilliant crimson; Austria, pure canary yellow; Admiral Courbet, lemon yellow, spotted with crimson; Admiral Gervais, yellow; Beaute Poitevine, bright rich crimson; Burbank,	

Each.

**Canna—**

rich canary, with a few carmine spots in throat; Chas. Henderson, red; Egandale, soft currant red; Florence Vaughan, bright rich golden yellow; Geoffrey St. Hillaire, orange and scarlet; Italia, bright orange scarlet; Madam Crozy, crimson scarlet, bordered with golden yellow; Miss Sarah Hill, rich carmine; Queen Charlotte, rich scarlet crimson.

**Caryopteris—**Mastacanthus (Blue Spirea).....2½ ft. 35

**Carnation—**New, 5 and 6-inch pots..... 50

2-inch pot..... 25

California Gold, color bright yellow, with light markings of soft red; Governor Roosevelt, color deep rich brilliant scarlet, heavily shaded with maroon; Prosperity, ground color pure white, overlaid with pink, deepening towards the center; Queen Louise, pure white.

**Carnation—**Selected Varieties, 5 and 6-inch pot, per 10, \$2.00 ..... 25

2-inch pot, per 10, \$1.00 ..... 15

C. A. Dana, delicate shell pink; Dr. Tevis, scarlet; Ethel Crocker, very large, perfect shade of pink; Ed Convey, deep golden yellow; Elsie Ferguson, deep orange; E. H. Childs, very dark pink; Flora Hill, very large white; Grace Runyon, white, penciled light rose; Harrison White, pure white; H. Kunz, dazzling deep scarlet; Harriet Bradford, white, edged with scarlet; Helen Dean, light pink; John Hinkle, dark crimson; Iris Miller, light salmon, shaded with yellow; Lavender, light lavender color; Leslie Paul, deep rose; Lizzie McGowan, white; Lizzie Guilbert, bright scarlet; Mrs. Thomas W. Lawson, deep pink; Madam Albertini, light pink; Meteor, velvety maroon; Morello, scarlet crimson; Mrs. George M. Brandt, clear white, edged and striped with scarlet; Mrs. McBurney, clear salmon; Olympiada, glossy snow white, delicately penciled scarlet; Purple King, bright purple; Rose Queen, clear rose; Sophie Sievers, rich golden yellow; Tidal Wave, dark pink; Triumph, bright pink; Wm. Scott, pink.

**Chrysanthemum—**4-inch pot, per 10, \$2.00..... 25

Admiral Dewey, deep chrome yellow; Carrie Bell, delicate shell pink; Fee du Champsaur, pure white; Mavourneen, beautiful flesh pink; Meta, white; Nagoya, clear bright yellow; Pride, large white; Paul Bruant, red and gold; Silver Wedding, pure glossy white; Shilowa, brilliant crimson; Yellow Mayflower, clear lemon yellow; Willowbrook, white; Xeno, bright pink; Zoraido, white.

**Coreopsis—**Lanceolata, yellow, per 10, \$2.00..... 25

**Coleus—**Assorted, 4-inch pot..... 25

**Cyperus—**Alternifolius (Umbrella Plant), 5-inch pot..... 40

Gracilis, 5-inch pot..... 50

**Daisy—**Assorted, per 10, \$.75..... 10

**Desmodium—**Penduliflorum, purple..... 35





	Each.
<b>Pæonies</b> —Herbaceous, New .....	50
Ambroise Verschaffelti, purplish crimson; Constant Devred, soft clear purple; Decaisne, clear violet red; Delachei, dark crimson; Francis Ortegal, amaranth red; Flavescens, yellowish white; Formosa Alba, pure white, center sulphur yellow; Gloire Douai, dark crimson; Grandiflora Carnea, pink with light center; Grandiflora Nivea, pure white; Leonie, salmon color; Louis Van Houtte, crimson; Madam Raguét, rosy pink; Madam Vilmorin, rose color; Papaperiflora, white, lightly tinged with yellow; Potsie plena, purple; Pres. McMahon, large, red; Queen of Perfection, white with sulphur; Triumph du Nord, violet rose, large flower.	
<b>Pæonies</b> —Herbaceous, Assorted, per 10, \$2.00 .....	25
Amabilis, double red; Comte de Paris, lilac rose, center creamy white; Delectatissima, delicate, fine rose, very large; Edulis, light violet rose, center creamy white; Elegantissima, red, light center; Globosa, white; Officinalis, single red; Pottsii, pink, with creamy center; Reevesii, pink, with light center; Violacea, deep violet purple.	
<b>Pelargonium</b> —4 and 5-inch pot.....	25
Agatha, bright crimson; Beauty of Oxton, maroon; Black Prince, dark red; Blue Mabel, rich plum shade; Captain Raikes, dark fiery crimson; Cecilia, dark maroon; Dr. Masters, dark red; Duchess of Bedford, white; Duchess of Teck, white; Duke of Albany, maroon; Embassy, white; Lord Derby, pink; Mabel, maroon; Madam Thiabaut, white; Myra, maroon; Milton, dark maroon; Madam Vibert, black maroon; Mrs. Perkins, white; Gloire de Tours, bright dark scarlet; Neptune, purple; Plateau, crimson; Prince of Pelargoniums, scarlet; Princess Beatrice, blush white; Princess Maud, carmine; Rustic, crimson; Striata Elegans, purple; Variegated, striped deep rose and carmine.	
<b>Petunia</b> —Double assorted colors, 4-inch pot.....	25
<b>Plumbago</b> —Capensis, blue, 4-inch pot.....	25
Capensis Alba, white flowers, 4-inch pot .....	35
<b>Phlox</b> —Herbaceous, assorted.....	35
<b>Platycodon</b> —Grandiflora, blue .....	40
Marisii, blue .....	40
<b>Primula</b> —Vulgaris (English Primrose), per 10, \$1.00.....	15
<b>Rudbeckia</b> (Golden Glow)—Per 10, \$2.00.....	25
<b>Russelia</b> —Elegantissima, flowers bright coral red, a trailing plant, suitable for hanging baskets, vases, and window boxes.....	35
<b>Ruscus</b> —Aculeatus, per 10, \$2.00 .....	25
<b>Saxifraga</b> —Umbrosa (London Pride), blush, per 10, \$2.00.....	25
<b>Sedum</b> —Stone Crop, 10 varieties, per 10, \$2.00.....	25
<b>Selaginella</b> —Emiliana, 4-inch pot .....	25
<b>Sempervivum</b> (House Leek)—Per 10, \$.50; per 100, \$2.00.	
<b>Solanum</b> —Pseudo Capsicum (Jerusalem Cherry).....	50



	Each.
<b>Solidago</b> —Canadensis (Golden Rod) .....	25
Serotina, yellow .....	25
<b>Strelitzia</b> —Regina, 10x10-inch box.....	1 00
<b>Tritoma</b> —Uvaria (Poker Plant), per 10, \$2.00.....	25
<b>Tradescantia</b> (Variegated Wandering Jew)—2-inch pot.....	25
<b>Verbena</b> —Assorted, all colors, per 10, \$.75... ..	10
<b>Violets</b> —Large Clumps, per 10, \$2.00.....	25
Golden Gate, Marie Louise, Princess of Wales, California, La France.	
<b>Veronica</b> —Arkansana.....	35

## *Bulbous and Tuberos Rooted Plants*

	Each.
<b>Agapanthus</b> —Umbellatus, blue.....	35
<b>Amaryllis</b> —Belladonna, pink, per 10, \$1.50.....	25
Formosissima, crimson scarlet.....	50
Johnsonii, wine red, with white stripes.....	50
Lindenii, color varying from nearly white to dark crimson.....	50
Lutea, yellow.....	50
Longifolia Alba (Crinum Capensis), large white flowers, very fragrant .....	40
<b>Imantophyllum</b> —Hybridum.....	75
<b>Calla Lily</b> —Common, Spotted, and Black, per 10, \$2.00.....	25
Aurea, Hastata, Italian Giant, and Little Gem.....	35
<b>Crinum</b> —Amabile.....	50
<b>Dahlia</b> —Double and Single, per 10, \$2.00.....	25
Cactus, new, 12 varieties.....	35
<b>Gladioli</b> —Assorted colors, per 10, \$.75.....	10
<b>Lily</b> —Assorted, Auratum, Album, Candidum (St. Joseph's Lily), Longiflorum Harrisii (Bermuda Lily), Rubrum, per 10, \$2.00.....	25
<b>Montbretia</b> —Crocsmiaflora, per 10, \$1.00.....	15
<b>Oxalis</b> —Buttercup, per 10, \$1.00.....	15
<b>Narcissus</b> —Assorted, per 10, \$1.00.....	15
<b>Tuberose</b> —Double Italian and Pearl, per 10, \$.75.....	10

## Water Plants

	Each.
<b>Papyrus</b> —Antiquorum (Egyptian Paper Plant), 6-inch pot.....	50
<b>Nelumbium Speciosum</b> (Egyptian Lotus)—Rose pink.....	75
Large white.....	1 50
<b>Nymphea</b> —Flava (Florida Water Lily), yellow.....	50
Odorata (Fragrant Water Lily).....	50
Odorata Rosea (Fragrant Water Lily), rose-flowering..	75



## Catalogues

The following catalogues are published, some annually, others at intervals as becomes necessary, and are mailed free to customers, as soon as issued, and to all other applicants on receipt of amount in stamps named below:—

No. 1. Descriptive Catalogue of Fruit Trees, Small Fruits, Figs, Olives, etc., 2 cents.

No. 2. Descriptive Catalogue of Shade and Ornamental Trees, Shrubs, Roses, Climbing Plants, etc., 2 cents.

No. 3. Price List, free.

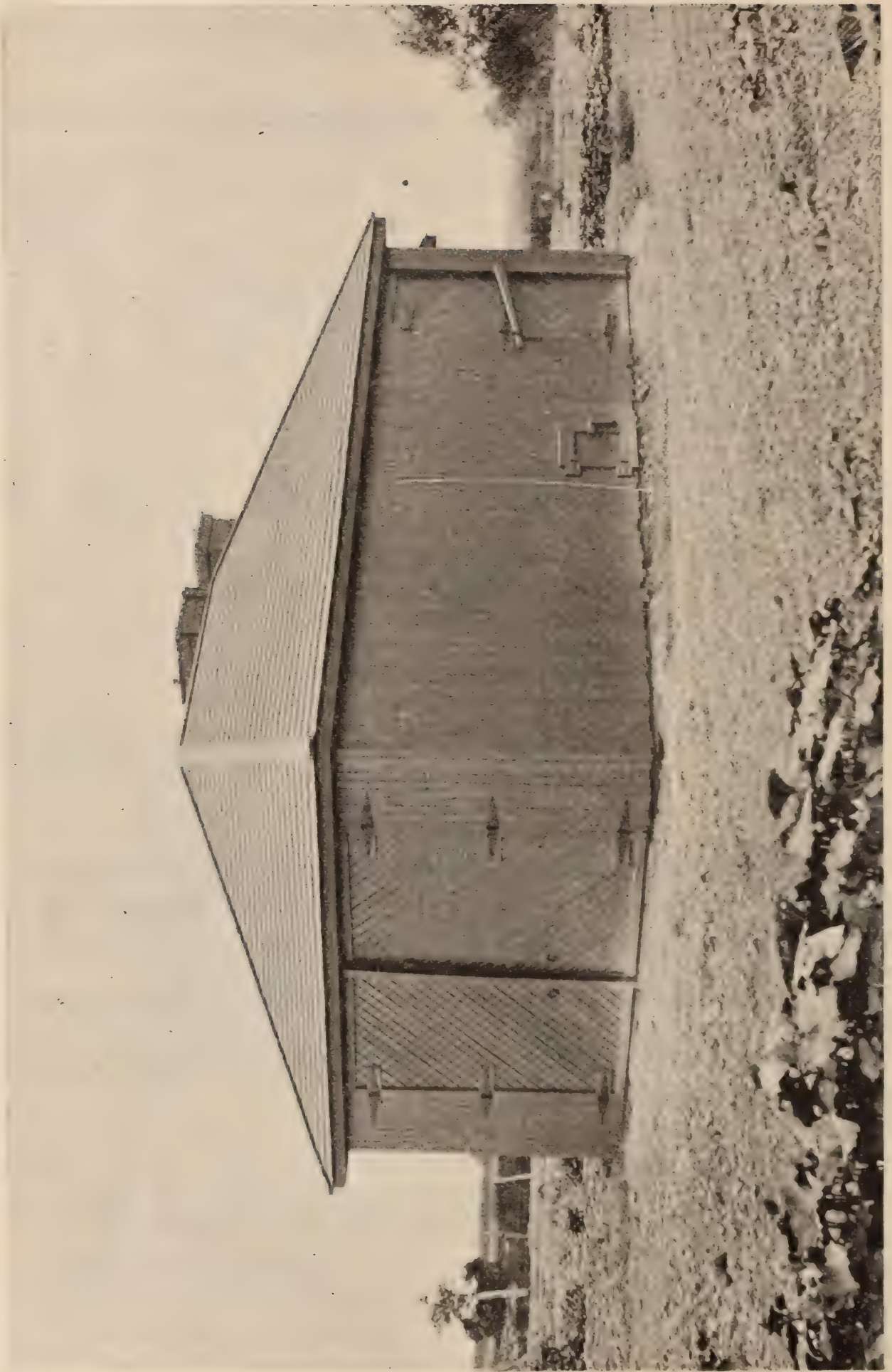
No. 4. Phylloxera-Resisting American Grapes, free.

CALIFORNIA NURSERY COMPANY,

John Rock, Manager.

Niles, Cal., December 1, 1901.





FUMIGATING HOUSE

# INDEX

## FRUIT DEPARTMENT

	PAGE.		PAGE.
Almonds.....	11	Liquorice.....	16
Apples, Autumn.....	6	Logan Berry.....	16
Apples, Summer.....	6	Loquat.....	13
Apples, Winter.....	6	Medlar.....	14
Apples, Woolly Aphis Proof.....	5	Mulberries.....	14
Apricots.....	10	Nectarines.....	10
Asparagus.....	16	Olives.....	14
Blackberries.....	16	Opuntia Ficus.....	16
Butternut.....	11	Oranges.....	12, 13
Caper.....	16	Peaches, Clingstone.....	10
Carob.....	13	Peaches, Freestone.....	9
Catalogues.....	59	Pears, Autumn.....	7
Cherries.....	8	Pears, Dwarf.....	7
Chestnuts.....	11	Pears, Summer.....	7
Crab Apples.....	7	Pears, Winter.....	7
Currants.....	16	Pecans.....	11
Dewberries.....	16	Persimmons.....	13
Distances for Planting.....	4	Pistachio Nut.....	12
Eleagnus.....	16	Plums.....	8
Figs.....	10, 11	Pomegranate.....	13
Filberts.....	11	Pomelo.....	13
Gooseberries.....	16	Prunes.....	8, 9
Grapes, American.....	14	Quinces.....	10
Grapes, Foreign.....	14	Raspberries.....	16
Grapes, Resistant.....	15	Remarks.....	3
Grapes, Grafted or Resistant.....	15, 16	Rhubarb.....	16
Guava.....	13	Rue.....	16
Hints on Transplanting.....	4	Sage.....	16
Hop Roots.....	16	Special Notice.....	3
Horse Radish.....	16	Strawberries.....	16
Hovenia Dulcis.....	13	Thyme.....	16
Juneberry.....	14	To Correspondents.....	2
Lavender.....	16	Walnuts.....	12
Lemons.....	13	Walnuts, Grafted.....	12
Limes.....	13	Wineberry.....	16

## ORNAMENTAL DEPARTMENT

	PAGE.		PAGE.
Abutilon.....	54	Achillea.....	54
Acacia.....	19, 26, 27	Agapanthus.....	58
Acalypha.....	54	Agave.....	46
Achania.....	54	Akebia.....	41



## ORNAMENTAL DEPARTMENT—Continued

	PAGE.		PAGE.
Almond, Flowering..	19, 38	Catalpa.....	20
Althea.....	38	Caragana.....	38
Amaryllis.....	58	Caryopteris.....	55
Ampelopsis.....	41	Ceanothus.....	29
Anemone.....	54	Cedar.....	29
Apple, Flowering.....	19	Cephalotaxus.....	29
Apricot, Flowering.....	19	Cestrum.....	29
Arbor Vitæ.....	27	Chamœcerasus.....	38
Arbutus.....	27	Cherry, Flowering..	38
Aralia.....	27	Cherry, Weeping..	25, 38
Araucaria.....	27	Chamæcyparis.....	29
Areca.....	43	Chamærops.....	43, 44
Armeria.....	54	Chestnut.....	17, 20
Arundo donax.....	54	Choisya.....	29
Ash.....	17, 19, 25	Cercidiphyllum.....	38
Asparagus.....	54	Clematis.....	41
Aspidistra.....	54	Clianthus.....	42
Acuba.....	27	Climbing and Trailing Plants..	41
Azalea.....	27	Cobea.....	42
Azara.....	27	Cocos.....	44
Bamboo.....	27, 28	Coleus.....	55
Banana.....	54	Coronilla.....	38
Beech.....	19	Corchorus.....	38
Bocconia.....	54	Cōreopsis.....	55
Begonias.....	54	Cornus Rubra.....	38
Berberris.....	28	Cotoneaster.....	29
Berberry.....	38	Corynocarpus.....	29
Bignonia.....	41	Corypha.....	44
Birch.....	19, 25	Christmas Berry... ..	29
Blue Gum (see Eucalyptus).....	28	Chrysanthemums.....	55
Bougainvillea.....	41	Crape Myrtle.....	38
Box.....	28, 37	Cratægus.....	29
Brachychiton.....	28	Crinum.....	58
Broom.....	38	Cryptomeria.....	29, 30
Brugmansia.....	54	Currants, Flowering..	39
Buckeye.....	20	Cunninghamia.....	30
Bulbous and Tuberos Rooted Plants..	58	Cypress.....	30, 37
Butternut.....	20	Cyperus.....	55
Calla Lily.....	58	Cytisus.....	39
California Fan Palm.....	45	Dahlia.....	58
California Big Tree.....	28	Daisies.....	55
California Laurel.....	28	Dasyllirion.....	47
California Nutmeg.....	28	Daphne.....	30
California Wild Cherry.....	29	Daphniphyllum.....	30
Calycanthus ..	38	Deciduous Ornamental Trees.....	17, 19
Camellia.....	29	Deciduous Flowering Shrubs ..	38
Camphor Tree.....	29	Deciduous Weeping Trees.....	25
Canna.....	54, 55	Decorative Bedding and Border Plants..	54
Carnations.....	55	Decumaria.....	42
Cassia.....	29	Deeringea.....	30



## ORNAMENTAL DEPARTMENT—Continued

	PAGE.		PAGE.
Desmodium .....	55	Ivy .....	42
Deutzia .....	39	Jasmine .....	42
Diosma .....	30	Jubea .....	44
Dogwood .....	39	Judas Tree .....	21
Dolichos .....	42	Juniper .....	32
Dracæna .....	46	Kennedya .....	42
Dymorphantus .....	20	Kentia .....	44
Echeveria .....	56	Laburnum .....	21, 25
Elder .....	39	Lantanas .....	56
Eleagnus.....	30	Larch .....	21
Elm ....	17, 18, 25	Laurel .....	32
Erythea .....	44	Laurestinus .....	33, 37
Erythrina .....	39	Lemon Verbena .....	39
Escallonia .....	30, 31	Lycesteria .....	39
Eulalia.....	56	Libocedrus .....	33
Eucalyptus .....	31	Ligustrum .....	33, 37
Eugenia .....	31	Lilies .....	58
Euonymous, Evergreen .....	31	Lily of the Valley .....	56
Euonymous (Spindle Tree) .....	39	Lilac.....	39
Evergreen Hedge Plants .....	37	Linden.....	18, 21, 25
Evergreen Trees and Shrubs.....	26	Liquid Amber .....	21
Exochordia.....	39	Livistona.....	44
Fabiana .....	31	Locust.....	18, 21
Ferns .....	56	Loquat.....	33
Ficus .....	31	Lycium .....	42
Fontanesia .....	31	Maiden Hair Tree .....	21
Fuchsia.....	39, 56	Magnolia Deciduous.....	21, 40
Gaillardia .....	56	Magnolia Evergreen .....	33
Garrya .....	32	Mahonia.....	33, 34
Gazania .....	56	Mandevillea .....	42
Geranium .....	56	Mannettia .....	42
Gladioli .....	58	Maple .....	18, 21, 22
Grevillea .....	32	Maple, Japanese .....	40
Guava .....	32	Marguerites .....	56
Habrothamnus .....	32	Melaleuca .....	34
Heath .....	32	Metinea .....	34
Helianthus .....	56	Metrosideros.....	34
Heliotrope .....	56	Mock Orange (Philadelphus) .....	40
Hibiscus.....	39	Montbretia .....	58
Holly .....	32	Mountain Ash.....	22, 25
Hollyhocks .....	56	Mulberry.....	22, 23, 25
Honeysuckle .....	39, 42	Murraya.....	34
Horse Chestnut.....	18, 20, 21	Myrtle .....	34
Hunnemannia .....	56	Nandina.....	34
Hydrangea .....	39	Narcissus.....	58
Hypericum .....	32, 39, 56	Nelumbium .....	59
Imantophyllum.....	58	New Zealand Flax .....	56
Ipomea.....	42	Nolina .....	47
Isolepis.....	56	Nymphaea .....	59
Iris .....	56	Oak.....	18, 23, 34



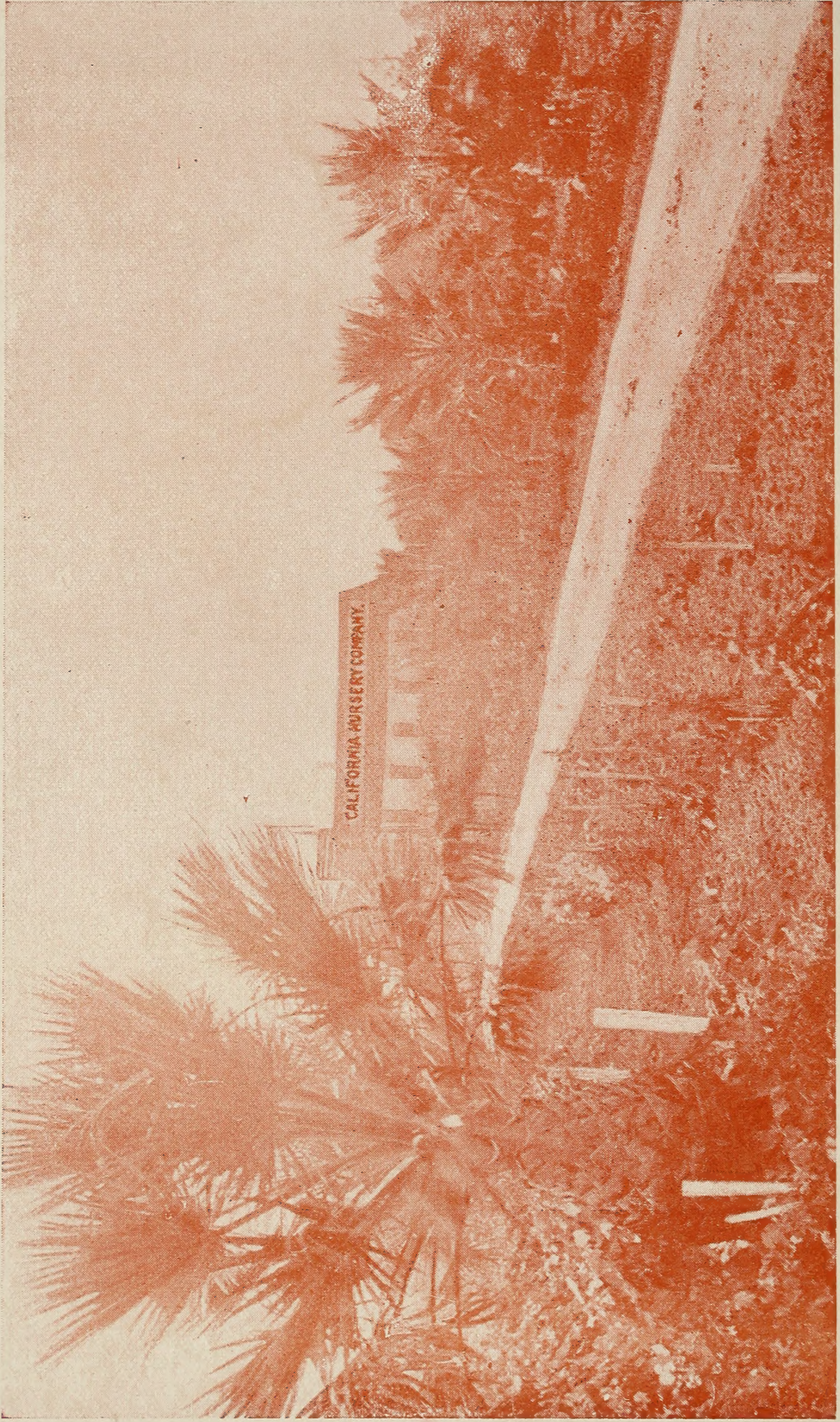
## ORNAMENTAL DEPARTMENT—Continued

	PAGE.		PAGE.
Olea .....	34	Sabal .....	45
Oleander .....	34	Saxifraga .....	57
Orange.....	34	Sciadopitys .....	36
Oxalis.....	58	Sempervivum.....	57
Pæony, Herbaceous .....	57	Sedum .....	57
Paliurus.....	4 <sup>o</sup>	Selaginella ...	57
Palms, Dracænas, Agaves, Yuccas, etc.	43	Silk Vine.....	42
Pampas Grass .....	56	Smilax .....	42
Pandanus .....	45	Solanum .....	42, 57
Pansy .....	56	Solidago .....	58
Papyrus Antiquorum.....	59	Sollya .....	42
Paulownia .....	18, 23	Sorbus Domestica .....	24
Passion Vine .....	42	Snowball .....	40
Peach, Flowering.....	23	Snowberry .....	40
Pecan .....	23	Sophora .....	18, 24, 25
Pepper Tree .....	34	Spirea .....	40
Petunia .....	57	Spruce .....	36
Phaseolus .....	42	Staphylea .....	40
Phlox .....	57	Strelitzia .....	58
Phoenix .....	44, 45	Styrax .....	41
Photinia.....	35, 40	Swainsonia .....	42
Physianthus .....	42	Sycamore .....	18, 24
Pelargonium .....	57	Tecoma .....	42
Pine .....	35	Texas Umbrella..	24
Pittisporum .....	35	Thorn .....	24, 25
Platycodon .....	57	Thuja .....	37
Plumbago .....	57	Thujopsis .....	37
Plums, Flowering .....	23, 40	Tradescantia... ..	58
Poinciana .....	40	Trained Trees .....	17
Polygala .....	35	Tree Pæony .....	41
Pomegranate, Flowering .....	40	Tritoma (Poker Plant).....	58
Poplar .....	18, 23, 24, 25	Trumpet Vine .....	40
Primula .....	57	Tuberose .....	58
Pritchardia .....	45	Tulip Tree.....	24
Privet .....	35, 37	Verbena.....	58
Purple Fringe .....	40	Veronica.....	37, 58
Pyrus Arbutifolia .....	40	Viburnum .....	37, 41
Quince, Flowering .....	40	Violets.....	58
Raphiolepis.....	35	Vitex .....	41
Redwood.....	36	Vitis .....	42
Retinospora .....	36	Walnuts .....	18, 24, 25
Rhododendron .....	36	Washingtonia Palm .....	45
Rhodotyus Kerrioides.....	40	Water Plants .....	59
Rhus.....	40	Weigelia .....	41
Rose Acacia .....	40	White Fringe.....	41
Rosemary .....	36	Willow.....	25
Roses .....	48 to 53	Wistaria.....	42
Rudbeckia .....	57	Yew .....	37
Ruscus .....	57	Yucca .....	46, 47
Russelia.....	57		









CALIFORNIA NURSERY CO.'S GROUNDS FROM THE RAILROAD.